

Mission of
the Delaware
Division of Vocational
Rehabilitation:

*Our mission is to provide
opportunities and resources
to eligible individuals with
disabilities, leading to
success in employment and
independent living.*



Delaware Division of
Vocational Rehabilitation

4425 North Market Street
P.O. Box 9969
Wilmington, Delaware 19809-0969
Phone: (302) 761-8275
Fax: (302) 761-6611



Order of Selection



Delaware Division of
Vocational Rehabilitation



*Helping People with disabilities
go to work*

What is an Order of Selection?

When a vocational rehabilitation agency identifies that it may no longer have the resources to serve all eligible applicants, the Rehabilitation Act requires that services must be focused on individuals with the most significant disabilities. The process of developing service priorities is called an Order of Selection.

Why is DVR moving to an Order of Selection?

The number of individuals seeking services from DVR has climbed significantly and at a pace that is greater than the increase in available funds. DVR has taken, and will continue to take, steps to get the maximum benefit out of the available funds. At this time, it is necessary to institute a means of ensuring that resources are focused on those with the greatest need.



What does this mean for me?

If you are currently receiving services under a signed Individualized Plan for Employment, the Order of Selection **will not affect** your current or subsequent plans so long as your current case is active.

If you are not currently receiving services under a signed, Individualized Plan for Employment, you will receive services according to your priority category that will be decided if and when you are determined eligible for vocational rehabilitation services.

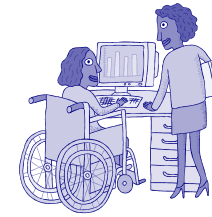
Will I be placed on a waiting list?

DVR will serve as many people as resources will allow. If the number of applicants exceeds the available resources, a waiting list may occur. Should a waiting list occur, individuals will be served according to severity of disability and *then* by date of application.

May I appeal my priority status?

Your DVR counselor will follow specific guidelines in determining your appropriate priority category; however, if you believe that you have

been incorrectly placed, you may appeal the decision through Due Process.



What are the Priority Categories?

Priority 1, Individuals with the Most Significant Disabilities: Individuals who have impairments that result in serious limitations in three or more functional capacities, resulting in the need for multiple vocational rehabilitation services over an extended period of time, six months or more.

Priority 2, Individuals with Significant Disabilities: Individuals who have impairments that result in serious limitations in one or two functional capacities, resulting in the need for multiple vocational rehabilitation services over an extended period of time, six months or more.

Priority 3, Individuals with Non-Significant Disabilities:

Eligible individuals with a disability who do not meet the definition for MSD or SD.