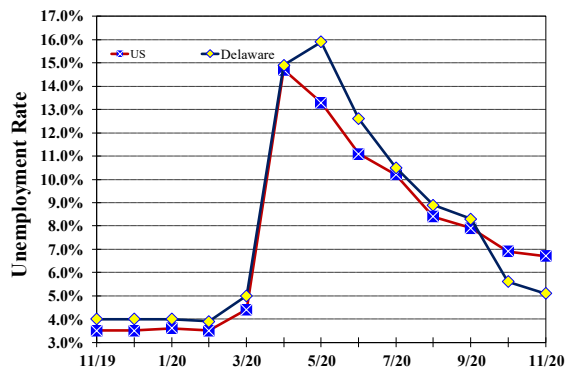


Unemployment Rate

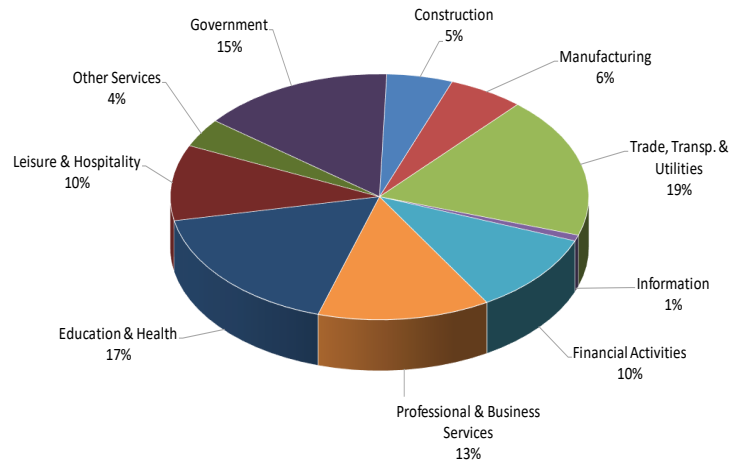
Delaware and US

November 2019 - November 2020



Percent Distribution of Delaware Nonfarm Employment

November 2020



Delaware Civilian Labor Force

Delaware Residents

	Nov. 2020	Oct. 2020	Nov. 2019
Civilian Labor Force	476,200	480,900	488,900
Employed	451,800	453,700	469,500
Unemployed	24,400	27,200	19,400
Unemployment Rate %	5.1	5.6	4.0
US Unemployment Rate %	6.7	6.9	3.5

Source: Delaware Dept. of Labor in cooperation with the US Dept. of Labor, Bureau of Labor Statistics.

Area Unemployment Rates (%)

	Nov. 2020	Oct. 2020	Nov. 2019
New Castle County	4.8	5.7	3.4
Wilmington	8.7	10.5	5.1
Newark	3.9	4.2	3.0
Kent County	5.0	5.9	3.8
Dover	7.3	8.6	4.9
Sussex County	4.1	4.6	3.7

Note: Area rates are not seasonally adjusted.

Source: Delaware Dept. of Labor in cooperation with the US Dept. of Labor, Bureau of Labor Statistics.

Hours & Earnings

All Employee (Total Private)

	Nov. 2020	Oct. 2020	Nov. 2019
Weekly Earnings	\$964.87	\$945.76	\$899.38
Weekly Hours	33.1	32.4	32.8
Hourly Earnings	\$29.15	\$29.19	\$27.42

Delaware Labor Force Trends

Delaware's seasonally adjusted unemployment rate in November 2020 was 5.1%, down from 5.6% in October 2020. There were 24,400 unemployed Delawareans in November 2020 compared to 19,400 in November 2019. The US unemployment rate was 6.7% in November 2020, down from 6.9% in October 2020. In November 2019, the US unemployment rate was 3.5%, while Delaware's rate was 4.0%.

In November 2020, seasonally adjusted nonfarm employment was 429,300, down from 430,500 in October 2020. Since October 2019, Delaware's total nonfarm jobs have decreased by a net loss of 37,600, a decline of 8%. Nationally, jobs during that period declined 6%.

Delaware Nonfarm Employment

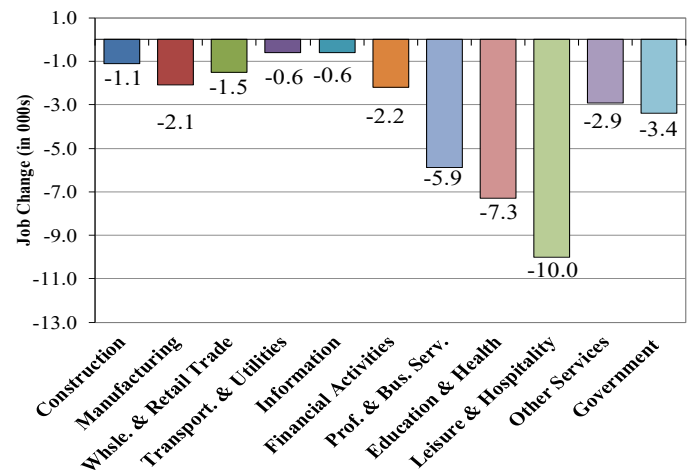
Jobs at Delaware Locations
Seasonally Adjusted (in 000s)

INDUSTRY GROUP	Nov. 2020	Oct. 2020	Over the Month Change	Over the Year Change†
TOTAL NONAG. EMP.	429.3	430.5	-1.2	-37.6
CONSTRUCTION	21.9	21.1	0.8	-1.1
MANUFACTURING	25.0	25.0	0.0	-2.1
Durable Goods	8.7	8.7	0.0	-1.0
Nondurable Goods	16.3	16.3	0.0	-1.1
TRADE, TRANSP., & UTIL.	79.8	79.3	0.5	-2.1
Wholesale Trade	10.4	10.4	0.0	-0.6
Retail Trade	52.6	52.6	0.0	-0.9
Transp. & Utilities	16.8	16.3	0.5	-0.6
INFORMATION *	3.4	3.4	0.0	-0.6
FINANCIAL ACTIVITIES	45.4	45.6	-0.2	-2.2
PROF. & BUS. SERVICES	57.1	58.6	-1.5	-5.9
EDUCATION & HEALTH	73.5	74.1	-0.6	-7.3
LEISURE & HOSPITALITY	42.8	42.5	0.3	-10.0
OTHER SERVICES	16.2	16.5	-0.3	-2.9
GOVERNMENT	64.2	64.4	-0.2	-3.4
Federal Government	5.8	6.1	-0.3	0.0
State Government	31.5	31.4	0.1	-2.0
Local Government	26.9	26.9	0.0	-1.4

* Industries are not seasonally adjusted.
† Annual changes are not seasonally adjusted.
Details may not add up due to rounding and seasonal adjustment.
Source: US Department of Labor, Bureau of Labor Statistics.

Delaware Over-the-Year Job Change

November 2019—November 2020



Consumer Price Index

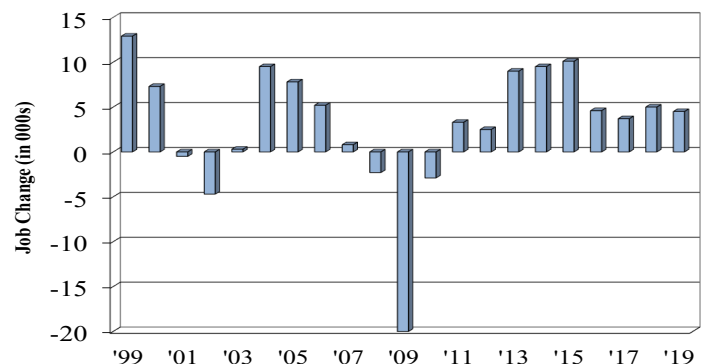
All Urban Consumers

	Percent Change to Nov. 2020 from:		
	Nov. 2019	Sept. 2020	Oct. 2020
US City Average	1.2	0.0	-0.1
Phila.-Camden-Wilm.*	NA	NA	NA

* Data are published on a bi-monthly basis.

Delaware Annual Net Job Change

Annual Average 1999—2019



Office of Occupational and Labor Market Information

For data questions, contact Tom Dougherty (302) 761-8062

<https://lmi.delawareworks.com>