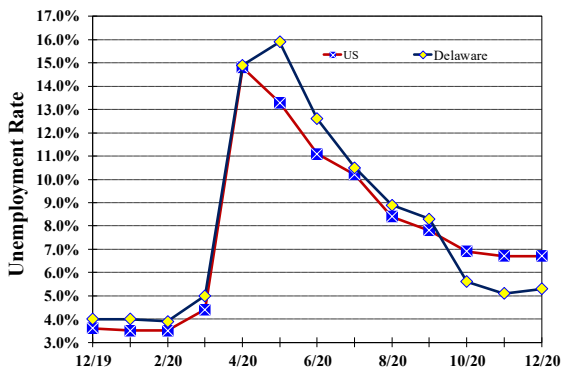


Unemployment Rate

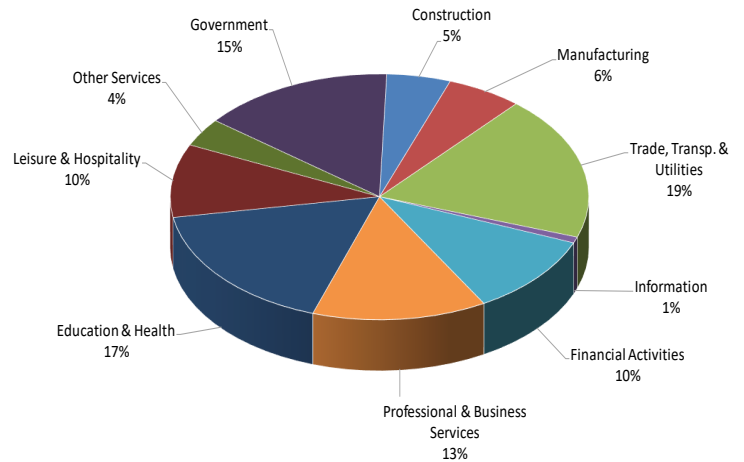
Delaware and US

December 2019 - December 2020



Percent Distribution of Delaware Nonfarm Employment

December 2020



Delaware Civilian Labor Force

Delaware Residents

	Dec. 2020	Nov. 2020	Dec. 2019
Civilian Labor Force	478,600	481,400	488,900
Employed	453,400	456,800	469,500
Unemployed	25,200	24,600	19,400
Unemployment Rate %	5.3	5.1	4.0
US Unemployment Rate %	6.7	6.7	3.6

Source: Delaware Dept. of Labor in cooperation with the US Dept. of Labor, Bureau of Labor Statistics.

Area Unemployment Rates (%)

	Dec. 2020	Nov. 2020	Dec. 2019
New Castle County	4.9	4.8	3.3
Wilmington	8.4	8.6	5.2
Newark	3.6	3.8	2.6
Kent County	5.2	4.9	3.7
Dover	7.4	7.2	4.6
Sussex County	4.5	4.1	4.0

Note: Area rates are not seasonally adjusted.

Source: Delaware Dept. of Labor in cooperation with the US Dept. of Labor, Bureau of Labor Statistics.

Hours & Earnings

All Employee (Total Private)

	Dec. 2020	Nov. 2020	Dec. 2019
Weekly Earnings	\$952.57	\$967.18	\$917.42
Weekly Hours	32.6	33.1	32.8
Hourly Earnings	\$29.22	\$29.22	\$27.97

Delaware Labor Force Trends

Delaware's seasonally adjusted unemployment rate in December 2020 was 5.3%, up from 5.1% in November 2020. There were 25,200 unemployed Delawareans in December 2020 compared to 19,400 in December 2019. The US unemployment rate was 6.7% in December 2020, unchanged from 6.7% in November 2020. In December 2019, the US unemployment rate was 3.6%, while Delaware's rate was 4.0%.

In December 2020, seasonally adjusted nonfarm employment was 429,500 up from 428,600 in November 2020. Since December 2019, Delaware's total nonfarm jobs have decreased by a net loss of 36,300, a decline of 7.8%. Nationally, jobs during that period declined 6%.

Delaware Nonfarm Employment

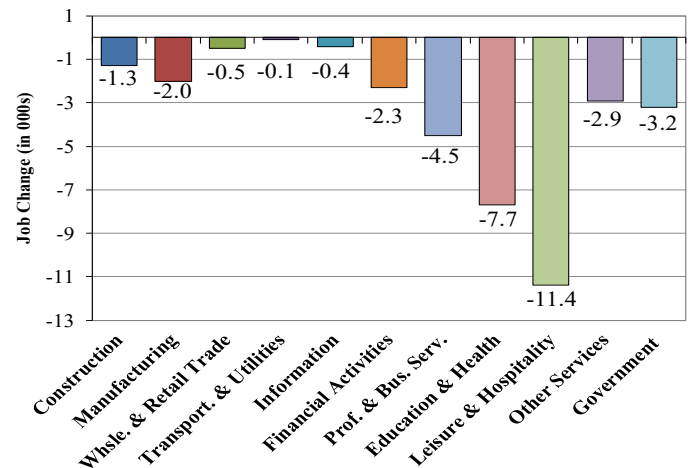
Jobs at Delaware Locations
Seasonally Adjusted (in 000s)

INDUSTRY GROUP	Dec. 2020	Nov. 2020	Over the Month Change	Over the Year Change†
TOTAL NONAG. EMP.	429.5	428.6	0.9	-36.3
CONSTRUCTION	21.2	21.9	-0.7	-1.3
MANUFACTURING	25.1	25.0	0.1	-2.0
Durable Goods	8.7	8.7	0.0	-1.0
Nondurable Goods	16.4	16.3	0.1	-1.0
TRADE, TRANSP., & UTIL.	81.6	79.6	2.0	-0.6
Wholesale Trade	11.1	10.5	0.6	0.0
Retail Trade	53.0	52.3	0.7	-0.5
Transp. & Utilities	17.5	16.8	0.7	-0.1
INFORMATION *	3.4	3.4	0.0	-0.4
FINANCIAL ACTIVITIES	45.4	45.5	-0.1	-2.3
PROF. & BUS. SERVICES	57.8	56.8	1.0	-4.5
EDUCATION & HEALTH	73.6	73.6	0.0	-7.7
LEISURE & HOSPITALITY	41.4	42.4	-1.0	-11.4
OTHER SERVICES	15.9	16.2	-0.3	-2.9
GOVERNMENT	64.1	64.2	-0.1	-3.2
Federal Government	5.8	5.7	0.1	0.1
State Government	31.3	31.4	-0.1	-2.1
Local Government	27.0	27.1	-0.1	-1.2

* Industries are not seasonally adjusted.
† Annual changes are not seasonally adjusted.
Details may not add up due to rounding and seasonal adjustment.
Source: US Department of Labor, Bureau of Labor Statistics.

Delaware Over-the-Year Job Change

December 2019—December 2020



Consumer Price Index

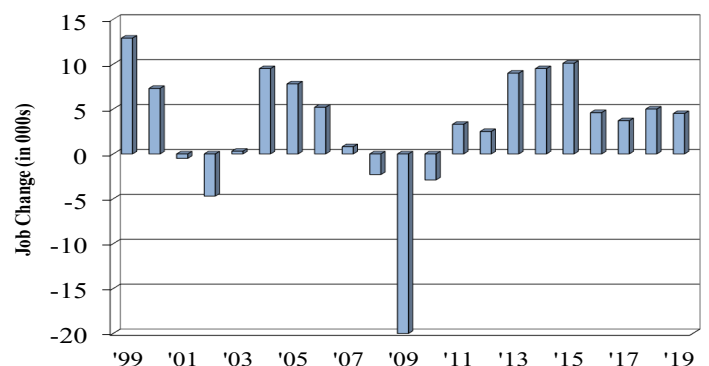
All Urban Consumers

	Percent Change to Dec. 2020 from:		
	Dec. 2019	Oct. 2020	Nov. 2020
US City Average	1.4	0.0	0.1
Phila.-Camden-Wilm.*	1.1	0.0	NA

* Data are published on a bi-monthly basis.

Delaware Annual Net Job Change

Annual Average 1999—2019



Office of Occupational and Labor Market Information

For data questions, contact Tom Dougherty (302) 761-8062

<https://lmi.delawareworks.com>