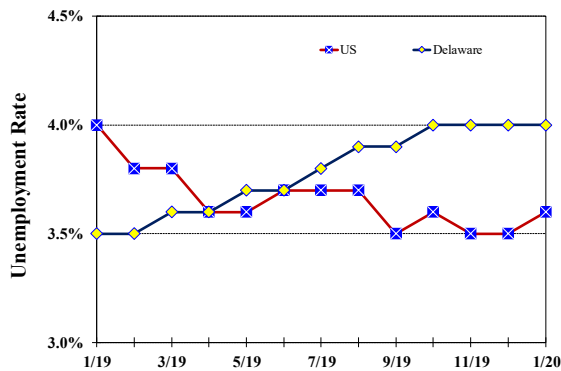


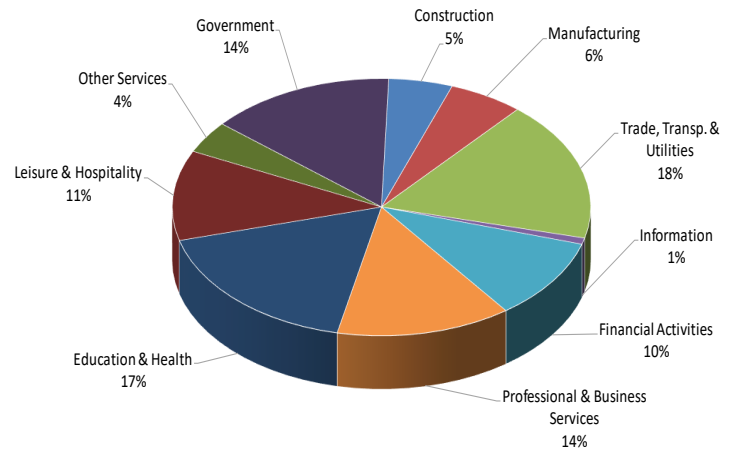
Unemployment Rate

Delaware and US
January 2019 - January 2020



Percent Distribution of Delaware Nonfarm Employment

January 2020



Delaware Civilian Labor Force

Delaware Residents

	Jan. 2020	Dec. 2019	Jan. 2019
Civilian Labor Force	488,900	488,900	484,900
Employed	469,500	469,500	467,800
Unemployed	19,400	19,400	17,100
Unemployment Rate %	4.0	4.0	3.5
US Unemployment Rate %	3.6	3.5	4.0

Source: Delaware Dept. of Labor in cooperation with the US Dept. of Labor, Bureau of Labor Statistics.

Area Unemployment Rates (%)

	Jan. 2020	Dec. 2019	Jan. 2019
New Castle County	4.0	3.3	3.6
Wilmington	5.9	5.2	5.3
Newark	3.6	2.6	2.9
Kent County	4.5	3.7	4.0
Dover	5.5	4.6	5.1
Sussex County	4.8	4.0	4.7

Note: Area rates are not seasonally adjusted.

Source: Delaware Dept. of Labor in cooperation with the US Dept. of Labor, Bureau of Labor Statistics.

Hours & Earnings

All Employee (Total Private)

	Jan. 2020	Dec. 2019	Jan. 2019
Weekly Earnings	\$910.29	\$917.42	\$855.68
Weekly Hours	32.2	32.8	32.4
Hourly Earnings	\$28.27	\$27.97	\$26.41

Delaware Labor Force Trends

Delaware's seasonally adjusted unemployment rate in January 2020 was 4.0%, unchanged from December 2019. There were 19,400 unemployed Delawareans in January 2020 compared to 17,100 in January 2019. The US unemployment rate was 3.6% in January 2020, up from 3.5% in December 2019. In January 2019 the US unemployment rate was 4.0%, while Delaware's rate was 3.5%.

In January 2020, seasonally adjusted nonfarm employment was 468,400, up from 465,900 in December 2019. Since January 2019, Delaware's total nonfarm jobs have increased by a net gain of +4,100, a rise of 0.9%. Nationally, jobs during that period increased 1.5%.

Delaware Nonfarm Employment

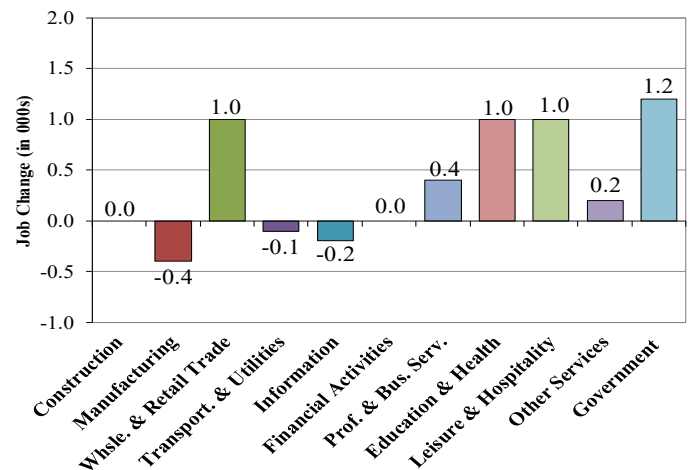
Jobs at Delaware Locations
Seasonally Adjusted (in 000s)

INDUSTRY GROUP	Jan. 2020	Dec. 2019	Over the Month Change	Over the Year Change†
TOTAL NONAG. EMP.	468.4	465.9	2.5	4.1
CONSTRUCTION	23.1	22.5	0.6	0.0
MANUFACTURING	27.1	27.0	0.1	-0.4
Durable Goods	9.7	9.6	0.1	-0.2
Nondurable Goods	17.4	17.4	0.0	-0.2
TRADE, TRANSP., & UTIL.	82.5	82.3	0.2	0.9
Wholesale Trade	11.0	11.1	-0.1	0.2
Retail Trade	54.0	53.6	0.4	0.8
Transp. & Utilities	17.5	17.6	-0.1	-0.1
INFORMATION *	3.7	3.8	-0.1	-0.2
FINANCIAL ACTIVITIES	47.8	47.6	0.2	0.0
PROF. & BUS. SERVICES	63.3	62.2	1.1	0.4
EDUCATION & HEALTH	81.5	81.3	0.2	1.0
LEISURE & HOSPITALITY	53.1	53.2	-0.1	1.0
OTHER SERVICES	19.0	18.8	0.2	0.2
GOVERNMENT	67.3	67.2	0.1	1.2
Federal Government	5.9	5.7	0.2	0.2
State Government	33.3	33.4	-0.1	0.3
Local Government	28.1	28.1	0.0	0.7

* Industries are not seasonally adjusted.
† Annual changes are not seasonally adjusted.
Details may not add up due to rounding and seasonal adjustment.
Source: US Department of Labor, Bureau of Labor Statistics.

Delaware Over-the-Year Job Change

January 2019—January 2020



Consumer Price Index

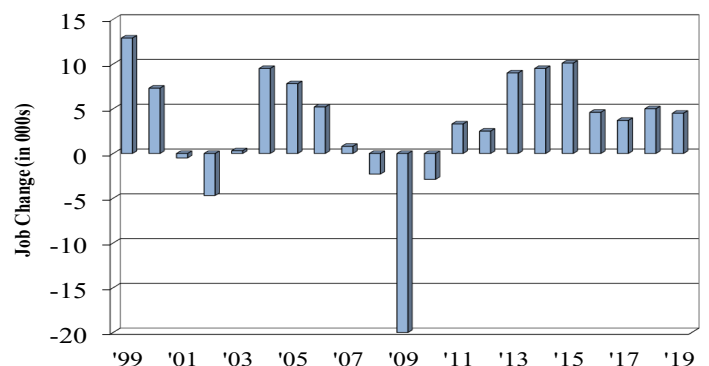
All Urban Consumers

	Percent Change to Jan. 2020 from:		
	Jan. 2019	Nov. 2019	Dec. 2019
US City Average	2.5	0.3	0.4
Phila.-Camden-Wilm.*	NA	NA	NA

* Data are published on a bi-monthly basis.

Delaware Annual Net Job Change

Annual Average 1999—2019



Office of Occupational and Labor Market Information

For data questions, contact Tom Dougherty (302) 761-8062

<https://lmi.delawareworks.com>