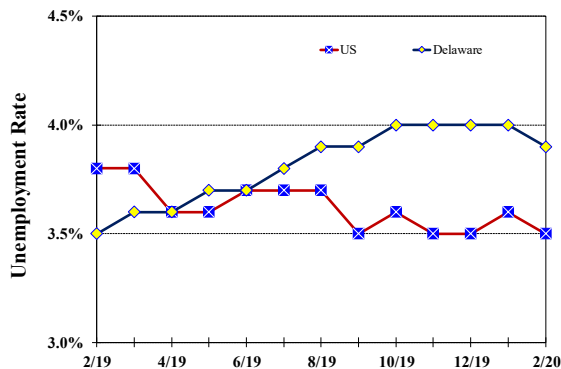


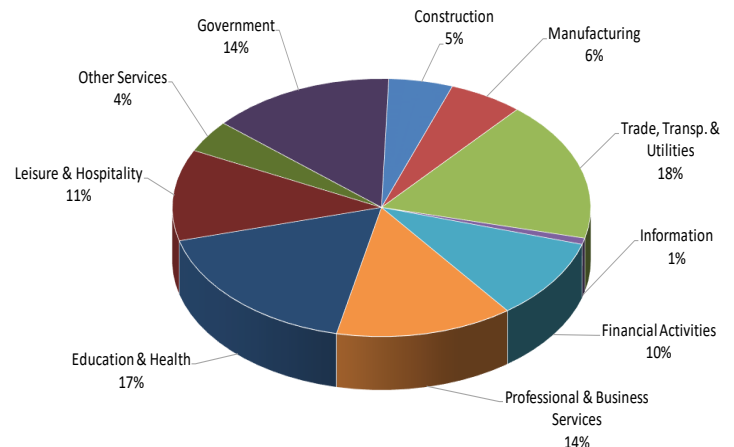
## Unemployment Rate

*Delaware and US*  
February 2019 - February 2020



## Percent Distribution of Delaware Nonfarm Employment

February 2020



## Delaware Civilian Labor Force

Delaware Residents

	Feb. 2020	Jan. 2020	Feb. 2019
Civilian Labor Force	489,100	488,900	485,400
Employed	469,900	469,500	468,200
Unemployed	19,200	19,400	17,200
Unemployment Rate %	3.9	4.0	3.5
US Unemployment Rate %	3.5	3.6	3.8

Source: Delaware Dept. of Labor in cooperation with the US Dept. of Labor, Bureau of Labor Statistics.

## Area Unemployment Rates (%)

	Feb. 2020	Jan. 2020	Feb. 2019
<b>New Castle County</b>	3.8	4.0	3.5
Wilmington	5.6	5.9	5.1
Newark	2.8	3.6	2.9
<b>Kent County</b>	4.4	4.5	4.1
Dover	5.4	5.5	5.2
<b>Sussex County</b>	4.6	4.8	4.5

Note: Area rates are not seasonally adjusted.

Source: Delaware Dept. of Labor in cooperation with the US Dept. of Labor, Bureau of Labor Statistics.

## Hours & Earnings

All Employee (Total Private)

	Feb. 2020	Jan. 2020	Feb. 2019
<b>Weekly Earnings</b>	\$909.14	\$906.18	\$866.18
<b>Weekly Hours</b>	32.4	32.1	32.6
<b>Hourly Earnings</b>	\$28.06	\$28.23	\$26.57

# Delaware Labor Force Trends

Delaware's seasonally adjusted unemployment rate in February 2020 was 3.9%, down from 4.0% in January 2020. There were 19,200 unemployed Delawareans in February 2020 compared to 17,200 in February 2019. The US unemployment rate was 3.5% in February 2020, down from 3.6% in January 2020. In February 2019 the US unemployment rate was 3.8%, while Delaware's rate was 3.5%.

In February 2020, seasonally adjusted nonfarm employment was 470,600, up from 469,300 in January 2020. Since February 2019, Delaware's total nonfarm jobs have increased by a net gain of +5,000, a rise of 1.1%. Nationally, jobs during that period increased 1.6%.

## Delaware Nonfarm Employment

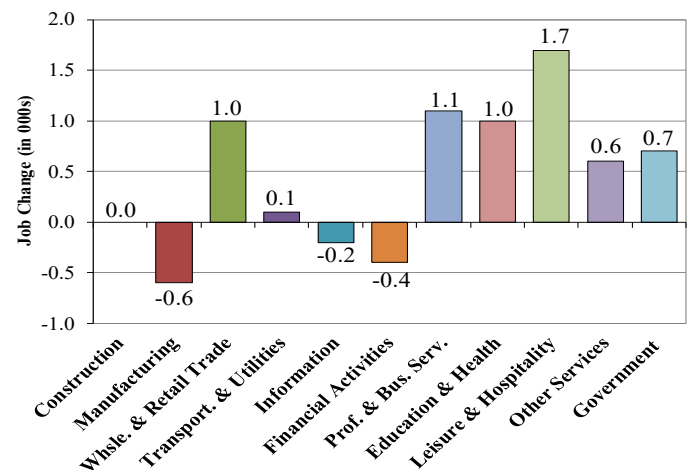
*Jobs at Delaware Locations*  
Seasonally Adjusted (in 000s)

INDUSTRY GROUP	Feb. 2020	Jan. 2020	Over the Month Change	Over the Year Change†
TOTAL NONAG. EMP.	470.6	469.3	1.3	5.0
CONSTRUCTION	23.3	23.2	0.1	0.0
MANUFACTURING	27.0	27.0	0.0	-0.6
Durable Goods	9.7	9.7	0.0	-0.2
Nondurable Goods	17.3	17.3	0.0	-0.4
TRADE, TRANSP., & UTIL.	82.8	82.6	0.2	1.1
Wholesale Trade	11.2	11.1	0.1	0.4
Retail Trade	53.7	53.8	-0.1	0.6
Transp. & Utilities	17.9	17.7	0.2	0.1
INFORMATION *	3.7	3.8	-0.1	-0.2
FINANCIAL ACTIVITIES	47.6	47.8	-0.2	-0.4
PROF. & BUS. SERVICES	64.5	63.8	0.7	1.1
EDUCATION & HEALTH	81.8	81.6	0.2	1.0
LEISURE & HOSPITALITY	53.9	53.3	0.6	1.7
OTHER SERVICES	19.1	19.1	0.0	0.6
GOVERNMENT	66.9	67.1	-0.2	0.7
Federal Government	5.7	5.9	-0.2	0.0
State Government	32.9	33.1	-0.2	0.0
Local Government	28.3	28.1	0.2	0.7

\* Industries are not seasonally adjusted.  
† Annual changes are not seasonally adjusted.  
Details may not add up due to rounding and seasonal adjustment.  
Source: US Department of Labor, Bureau of Labor Statistics.

## Delaware Over-the-Year Job Change

February 2019—February 2020



## Consumer Price Index

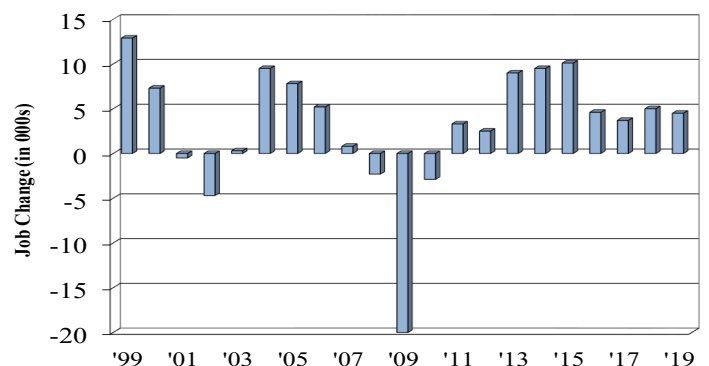
All Urban Consumers

	Percent Change to Feb. 2020 from:		
	Feb. 2019	Dec. 2019	Jan. 2020
<b>US City Average</b>	2.3	0.7	0.3
<b>Phila.-Camden-Wilm.*</b>	2.6	1.0	NA

\* Data are published on a bi-monthly basis.

## Delaware Annual Net Job Change

Annual Average 1999—2019



Office of Occupational and Labor Market Information

For data questions, contact Tom Dougherty (302) 761-8062

<https://lmi.delawareworks.com>