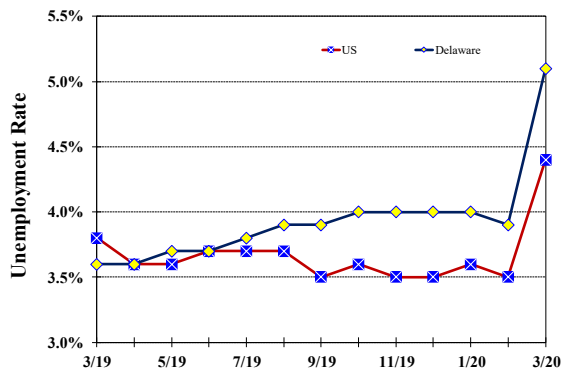


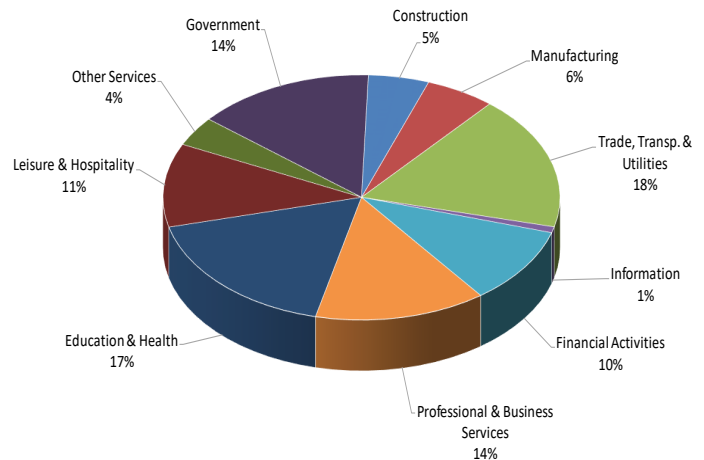
## Unemployment Rate

*Delaware and US*  
March 2019 - March 2020



## Percent Distribution of Delaware Nonfarm Employment

March 2020



## Delaware Civilian Labor Force

Delaware Residents

	Mar. 2020	Feb. 2020	Mar. 2019
Civilian Labor Force	478,300	489,200	485,700
Employed	453,800	470,000	468,300
Unemployed	24,500	19,200	17,400
Unemployment Rate %	5.1	3.9	3.6
US Unemployment Rate %	4.4	3.5	3.8

Source: Delaware Dept. of Labor in cooperation with the US Dept. of Labor, Bureau of Labor Statistics.

## Area Unemployment Rates (%)

	Mar. 2020	Feb. 2020	Mar. 2019
<b>New Castle County</b>	4.7	3.8	3.4
Wilmington	6.7	5.6	5.4
Newark	5.1	2.8	3.3
<b>Kent County</b>	5.5	4.4	3.9
Dover	7.4	5.4	4.8
<b>Sussex County</b>	5.4	4.6	4.2

Note: Area rates are not seasonally adjusted.

Source: Delaware Dept. of Labor in cooperation with the US Dept. of Labor, Bureau of Labor Statistics.

## Hours & Earnings

All Employee (Total Private)

	Mar. 2020	Feb. 2020	Mar. 2019
<b>Weekly Earnings</b>	\$904.50	\$907.85	\$889.73
<b>Weekly Hours</b>	32.2	32.4	33.1
<b>Hourly Earnings</b>	\$28.09	\$28.02	\$26.88

# Delaware Labor Force Trends

Delaware's seasonally adjusted unemployment rate in March 2020 was 5.1%, up from 3.9% in February 2020. There were 24,500 unemployed Delawareans in March 2020 compared to 17,400 in March 2019. The US unemployment rate was 4.4% in March 2020, up from 3.5% in February 2020. In March 2019, the US unemployment rate was 3.8%, while Delaware's rate was 3.6%.

In March 2020, seasonally adjusted nonfarm employment was 469,500, down from 472,400 in February 2020. Since March 2019, Delaware's total nonfarm jobs have increased by a net gain of +2,700, a rise of 0.6%. Nationally, jobs during that period increased 1.0%.

## Delaware Nonfarm Employment

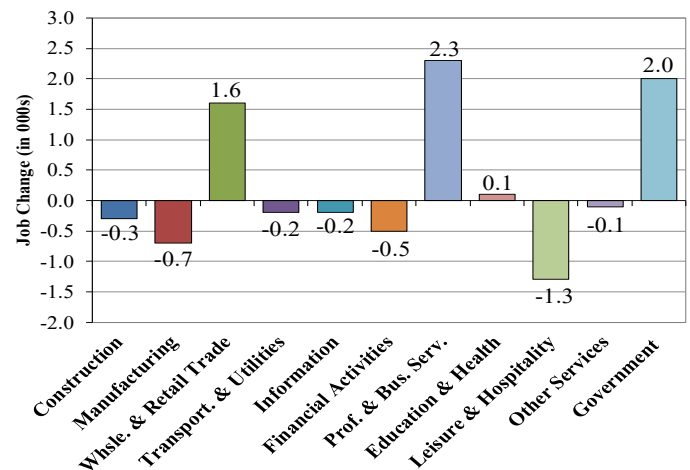
*Jobs at Delaware Locations*  
Seasonally Adjusted (in 000s)

INDUSTRY GROUP	Mar. 2020	Feb. 2020	Over the Month Change	Over the Year Change†
TOTAL NONAG. EMP.	469.5	472.4	-2.9	2.7
CONSTRUCTION	23.2	23.2	0.0	-0.3
MANUFACTURING	26.7	27.0	-0.3	-0.7
Durable Goods	9.5	9.7	-0.2	-0.3
Nondurable Goods	17.2	17.3	-0.1	-0.4
TRADE, TRANSP., & UTIL.	83.1	82.7	0.4	1.4
Wholesale Trade	11.5	11.0	0.5	0.5
Retail Trade	53.8	53.9	-0.1	1.1
Transp. & Utilities	17.8	17.8	0.0	-0.2
INFORMATION *	3.7	3.8	-0.1	-0.2
FINANCIAL ACTIVITIES	47.4	47.6	-0.2	-0.5
PROF. & BUS. SERVICES	65.5	65.4	0.1	2.3
EDUCATION & HEALTH	81.5	81.8	-0.3	0.1
LEISURE & HOSPITALITY	51.8	53.4	-1.6	-1.3
OTHER SERVICES	18.3	19.1	-0.8	-0.1
GOVERNMENT	68.3	68.4	-0.1	2.0
Federal Government	5.7	5.7	0.0	0.0
State Government	34.2	34.3	-0.1	1.2
Local Government	28.4	28.4	0.0	0.8

\* Industries are not seasonally adjusted.  
† Annual changes are not seasonally adjusted.  
Details may not add up due to rounding and seasonal adjustment.  
Source: US Department of Labor, Bureau of Labor Statistics.

## Delaware Over-the-Year Job Change

March 2019—March 2020



## Consumer Price Index

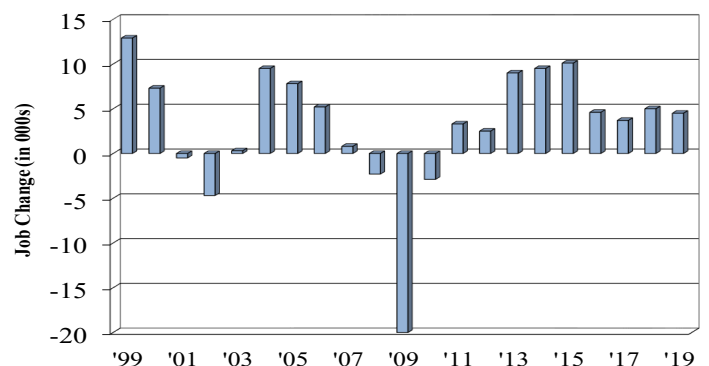
All Urban Consumers

	Percent Change to Mar. 2020 from:		
	Mar. 2019	Jan. 2020	Feb. 2020
<b>US City Average</b>	1.5	0.1	-0.2
<b>Phila.-Camden-Wilm.*</b>	NA	NA	NA

\* Data are published on a bi-monthly basis.

## Delaware Annual Net Job Change

Annual Average 1999—2019



Office of Occupational and Labor Market Information

For data questions, contact Tom Dougherty (302) 761-8062

<https://lmi.delawareworks.com>