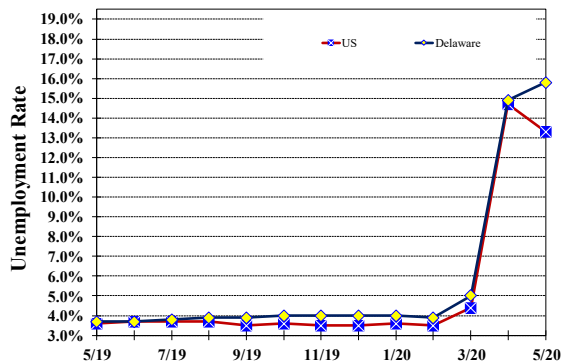


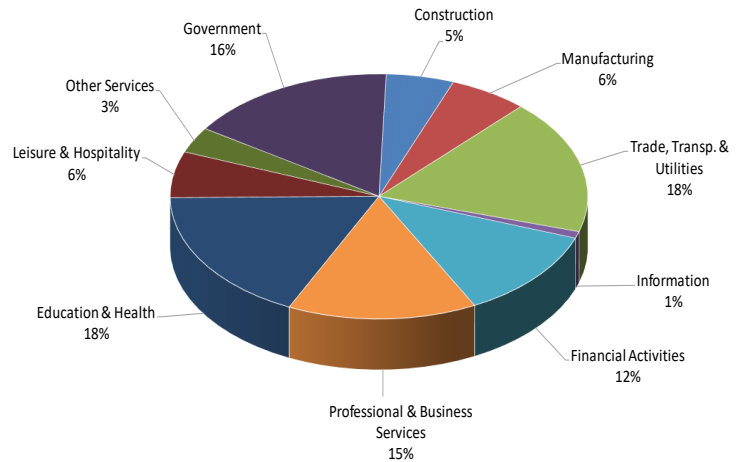
## Unemployment Rate

### Delaware and US May 2019 - May 2020



## Percent Distribution of Delaware Nonfarm Employment

May 2020



## Delaware Civilian Labor Force

Delaware Residents

	May 2020	Apr. 2020	May 2019
Civilian Labor Force	472,500	463,500	486,400
Employed	397,700	394,200	468,500
Unemployed	74,800	69,300	17,900
Unemployment Rate %	15.8	14.9	3.7
US Unemployment Rate %	13.3	14.7	3.6

Source: Delaware Dept. of Labor in cooperation with the US Dept. of Labor, Bureau of Labor Statistics.

## Area Unemployment Rates (%)

	May 2020	Apr. 2020	May 2019
<b>New Castle County</b>	14.9	14.1	3.3
Wilmington	19.9	17.6	5.2
Newark	10.8	9.9	3.5
<b>Kent County</b>	17.0	15.8	3.7
Dover	21.2	18.9	5.2
<b>Sussex County</b>	16.0	16.0	3.1

Note: Area rates are not seasonally adjusted.

Source: Delaware Dept. of Labor in cooperation with the US Dept. of Labor, Bureau of Labor Statistics.

## Hours & Earnings

All Employee (Total Private)

	May 2020	Apr. 2020	May 2019
<b>Weekly Earnings</b>	\$974.74	\$960.60	\$875.10
<b>Weekly Hours</b>	33.6	32.3	32.8
<b>Hourly Earnings</b>	\$29.01	\$29.74	\$26.68

# Delaware Labor Force Trends

Delaware's seasonally adjusted unemployment rate in May 2020 was 15.8%, up from 14.9% in April 2020. There were 74,800 unemployed Delawareans in May 2020 compared to 17,900 in May 2019. The US unemployment rate was 13.3% in May 2020, down from 14.7% in April 2020. In May 2019, the US unemployment rate was 3.6%, while Delaware's rate was 3.7%.

In May 2020, seasonally adjusted nonfarm employment was 392,300, up from 387,900 in April 2020. Since May 2019, Delaware's total nonfarm jobs have decreased by a net loss of 72,600, a decline of 15.5%. Nationally, jobs during that period declined 11.8%.

## Delaware Nonfarm Employment

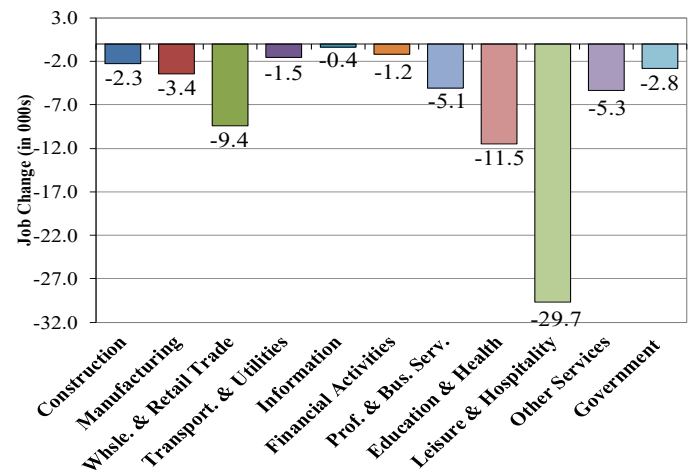
*Jobs at Delaware Locations*  
Seasonally Adjusted (in 000s)

INDUSTRY GROUP	May 2020	Apr. 2020	Over the Month Change	Over the Year Change†
TOTAL NONAG. EMP.	392.3	387.9	4.4	-72.6
CONSTRUCTION	20.6	20.2	0.4	-2.3
MANUFACTURING	23.9	23.5	0.4	-3.4
Durable Goods	8.6	8.8	-0.2	-1.1
Nondurable Goods	15.3	14.7	0.6	-2.3
TRADE, TRANSP., & UTIL.	69.7	69.0	0.7	-10.9
Wholesale Trade	9.8	9.7	0.1	-1.1
Retail Trade	43.4	43.1	0.3	-8.3
Transp. & Utilities	16.5	16.2	0.3	-1.5
INFORMATION *	3.5	3.5	0.0	-0.4
FINANCIAL ACTIVITIES	46.6	46.9	-0.3	-1.2
PROF. & BUS. SERVICES	57.4	56.0	1.4	-5.1
EDUCATION & HEALTH	69.6	68.6	1.0	-11.5
LEISURE & HOSPITALITY	23.9	22.6	1.3	-29.7
OTHER SERVICES	13.4	12.6	0.8	-5.3
GOVERNMENT	63.7	65.0	-1.3	-2.8
Federal Government	5.7	5.7	0.0	0.0
State Government	32.5	32.9	-0.4	-0.6
Local Government	25.5	26.4	-0.9	-2.2

\* Industries are not seasonally adjusted.  
† Annual changes are not seasonally adjusted.  
Details may not add up due to rounding and seasonal adjustment.  
Source: US Department of Labor, Bureau of Labor Statistics.

## Delaware Over-the-Year Job Change

May 2019—May 2020



## Consumer Price Index

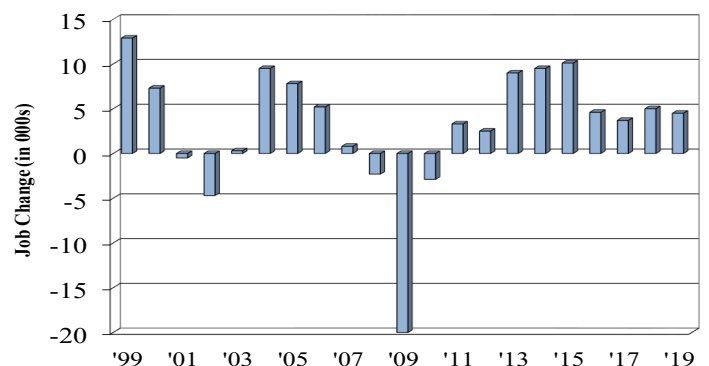
All Urban Consumers

	Percent Change to May 2020 from:		
	May 2019	Mar. 2020	Apr. 2020
<b>US City Average</b>	0.1	-0.7	0.0
<b>Phila.-Camden-Wilm.*</b>	NA	NA	NA

\* Data are published on a bi-monthly basis.

## Delaware Annual Net Job Change

Annual Average 1999—2019



Office of Occupational and Labor Market Information

For data questions, contact Tom Dougherty (302) 761-8062

<https://lmi.delawareworks.com>