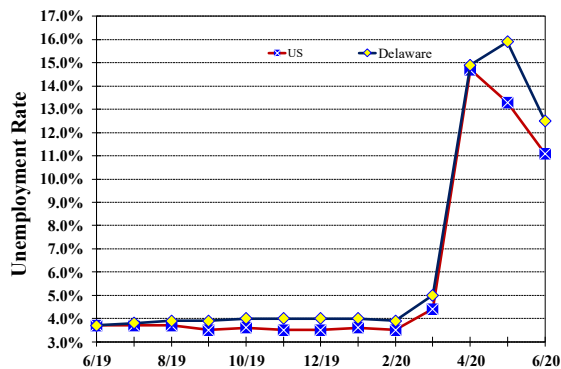


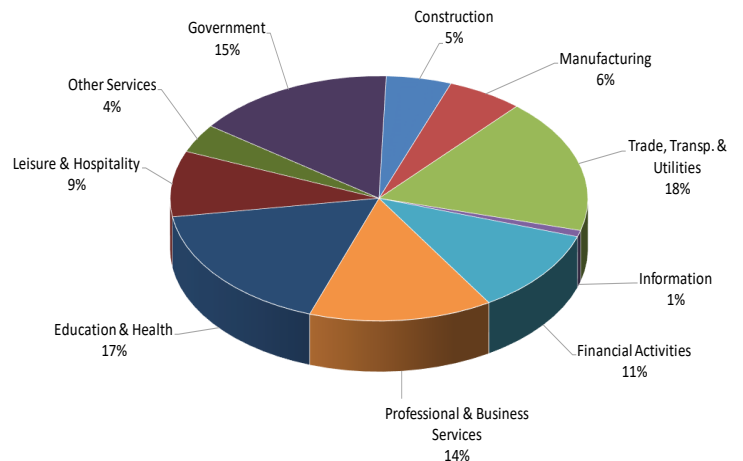
## Unemployment Rate

### Delaware and US June 2019 - June 2020



## Percent Distribution of Delaware Nonfarm Employment

June 2020



## Delaware Civilian Labor Force

Delaware Residents

	June 2020	May 2020	June 2019
Civilian Labor Force	487,800	472,600	486,900
Employed	426,800	397,700	468,700
Unemployed	61,000	74,900	18,200
Unemployment Rate %	12.5	15.9	3.7
US Unemployment Rate %	11.1	13.3	3.7

Source: Delaware Dept. of Labor in cooperation with the US Dept. of Labor, Bureau of Labor Statistics.

## Area Unemployment Rates (%)

	June 2020	May 2020	June 2019
<b>New Castle County</b>	12.8	15.0	4.1
Wilmington	18.6	20.1	6.3
Newark	9.4	10.7	4.2
<b>Kent County</b>	14.1	16.8	4.7
Dover	18.5	21.1	6.4
<b>Sussex County</b>	11.5	16.0	3.5

Note: Area rates are not seasonally adjusted.

Source: Delaware Dept. of Labor in cooperation with the US Dept. of Labor, Bureau of Labor Statistics.

## Hours & Earnings

All Employee (Total Private)

	Jun. 2020	May 2020	Jun. 2019
<b>Weekly Earnings</b>	\$940.83	\$965.03	\$886.09
<b>Weekly Hours</b>	33.0	33.3	33.1
<b>Hourly Earnings</b>	\$28.51	\$28.98	\$26.77

# Delaware Labor Force Trends

Delaware's seasonally adjusted unemployment rate in June 2020 was 12.5%, down from 15.9% in May 2020. There were 61,000 unemployed Delawareans in June 2020 compared to 18,200 in June 2019. The US unemployment rate was 11.1% in June 2020, down from 13.3% in May 2020. In June 2019, the US unemployment rate was 3.7%. Delaware's rate for that month was also 3.7%.

In June 2020, seasonally adjusted nonfarm employment was 415,900, up from 395,300 in May 2020. Since June 2019, Delaware's total nonfarm jobs have decreased by a net loss of 49,300, a decline of 10.5%. Nationally, jobs during that period declined 8.7%.

## Delaware Nonfarm Employment

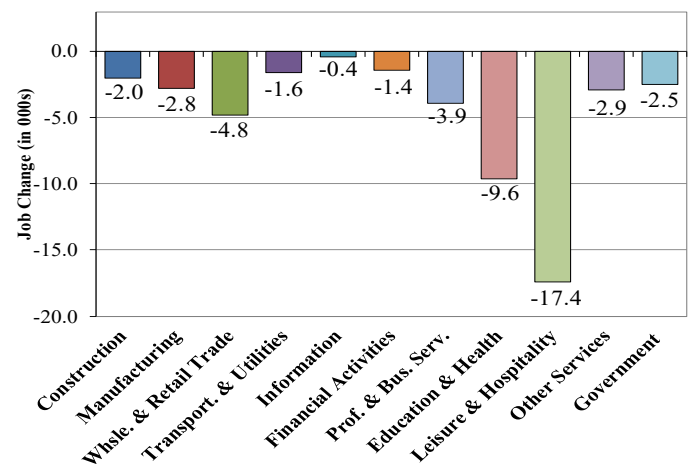
*Jobs at Delaware Locations*  
Seasonally Adjusted (in 000s)

INDUSTRY GROUP	Jun. 2020	May 2020	Over the Month Change	Over the Year Change†
TOTAL NONAG. EMP.	415.9	395.3	20.6	-49.3
CONSTRUCTION	21.0	20.8	0.2	-2.0
MANUFACTURING	24.4	23.9	0.5	-2.8
Durable Goods	8.7	8.6	0.1	-1.1
Nondurable Goods	15.7	15.3	0.4	-1.7
TRADE, TRANSP., & UTIL.	73.9	69.5	4.4	-6.4
Wholesale Trade	10.1	9.9	0.2	-1.0
Retail Trade	47.8	43.7	4.1	-3.8
Transp. & Utilities	16.0	15.9	0.1	-1.6
INFORMATION *	3.5	3.5	0.0	-0.4
FINANCIAL ACTIVITIES	46.2	46.4	-0.2	-1.4
PROF. & BUS. SERVICES	59.0	58.4	0.6	-3.9
EDUCATION & HEALTH	71.5	70.0	1.5	-9.6
LEISURE & HOSPITALITY	36.1	25.2	10.9	-17.4
OTHER SERVICES	15.8	13.3	2.5	-2.9
GOVERNMENT	64.5	64.3	0.2	-2.5
Federal Government	5.8	5.7	0.1	0.1
State Government	32.6	32.2	0.4	-0.5
Local Government	26.1	26.4	-0.3	-2.1

\* Industries are not seasonally adjusted.  
† Annual changes are not seasonally adjusted.  
Details may not add up due to rounding and seasonal adjustment.  
Source: US Department of Labor, Bureau of Labor Statistics.

## Delaware Over-the-Year Job Change

June 2019—June 2020



## Consumer Price Index

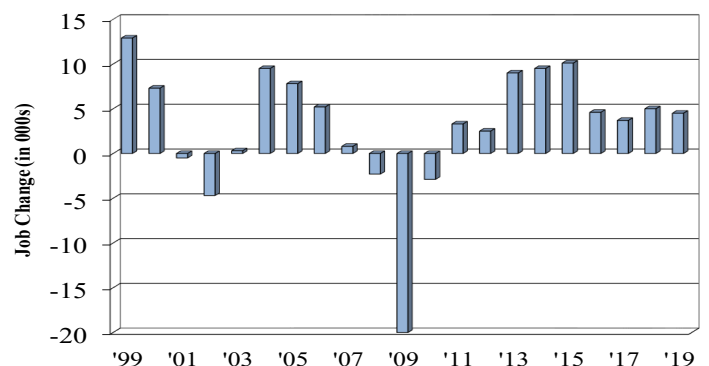
All Urban Consumers

	Percent Change to Jun. 2020 from:		
	Jun. 2019	Apr. 2020	May. 2020
<b>US City Average</b>	0.6	0.5	0.5
<b>Phila.-Camden-Wilm.*</b>	0.1	0.6	NA

\* Data are published on a bi-monthly basis.

## Delaware Annual Net Job Change

Annual Average 1999—2019



Office of Occupational and Labor Market Information

For data questions, contact Tom Dougherty (302) 761-8062

<https://lmi.delawareworks.com>