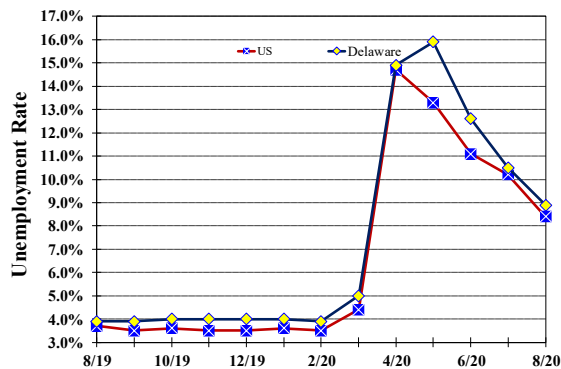


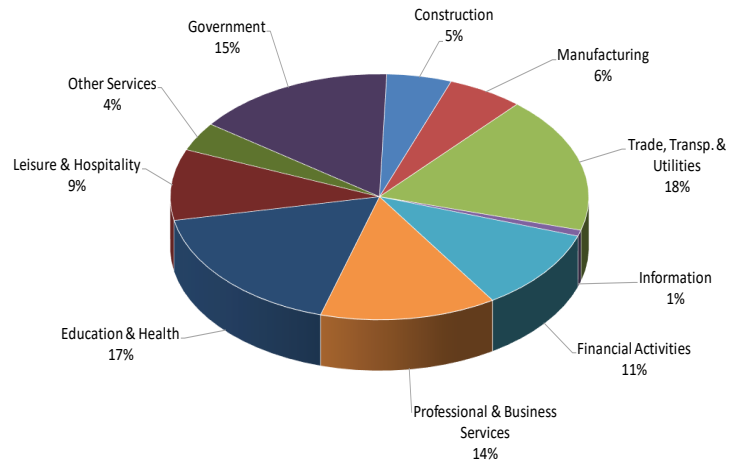
Unemployment Rate

Delaware and US
August 2019 - August 2020



Percent Distribution of Delaware Nonfarm Employment

August 2020



Delaware Civilian Labor Force

Delaware Residents

	Aug. 2020	July 2020	Aug. 2019
Civilian Labor Force	500,800	505,600	488,200
Employed	456,300	452,600	469,200
Unemployed	44,500	53,000	19,000
Unemployment Rate %	8.9	10.5	3.9
US Unemployment Rate %	8.4	10.2	3.7

Source: Delaware Dept. of Labor in cooperation with the US Dept. of Labor, Bureau of Labor Statistics.

Area Unemployment Rates (%)

	Aug. 2020	July 2020	Aug. 2019
New Castle County	9.4	11.0	4.2
Wilmington	14.9	16.6	6.1
Newark	6.9	8.8	4.2
Kent County	9.8	11.6	4.9
Dover	13.3	15.7	6.3
Sussex County	7.6	9.1	3.4

Note: Area rates are not seasonally adjusted.

Source: Delaware Dept. of Labor in cooperation with the US Dept. of Labor, Bureau of Labor Statistics.

Hours & Earnings

All Employee (Total Private)

	Aug. 2020	July 2020	Aug. 2019
Weekly Earnings	\$948.84	\$916.39	\$886.41
Weekly Hours	32.9	32.6	33.5
Hourly Earnings	\$28.84	\$28.11	\$26.46

Delaware Labor Force Trends

Delaware's seasonally adjusted unemployment rate in August 2020 was 8.9%, down from 10.5% in July 2020. There were 44,500 unemployed Delawareans in August 2020 compared to 19,000 in August 2019. The US unemployment rate was 8.4% in August 2020, down from 10.2% in July 2020. In August 2019, the US unemployment rate was 3.7%, while Delaware's rate was 3.9%.

In August 2020, seasonally adjusted nonfarm employment was 426,800, up from 421,700 in July 2020. Since August 2019, Delaware's total nonfarm jobs have decreased by a net loss of 41,300, a decline of 8.8%. Nationally, jobs during that period declined 7.0%.

Delaware Nonfarm Employment

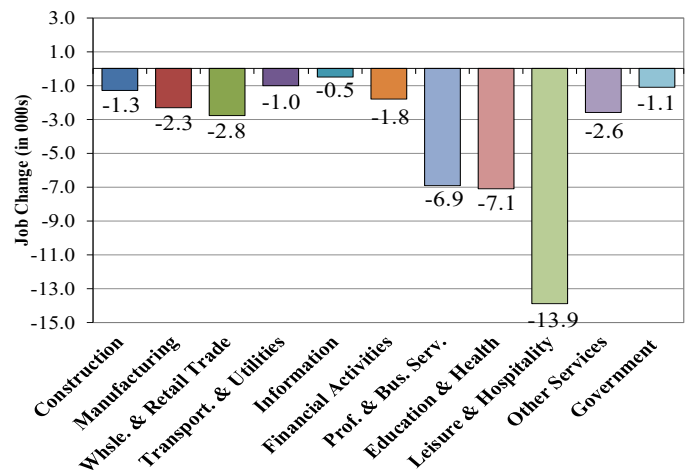
Jobs at Delaware Locations
Seasonally Adjusted (in 000s)

INDUSTRY GROUP	Aug. 2020	July 2020	Over the Month Change	Over the Year Change†
TOTAL NONAG. EMP.	426.8	421.7	5.1	-41.3
CONSTRUCTION	21.4	21.3	0.1	-1.3
MANUFACTURING	25.0	24.5	0.5	-2.3
Durable Goods	8.8	8.7	0.1	-1.0
Nondurable Goods	16.2	15.8	0.4	-1.3
TRADE, TRANSP., & UTIL.	76.7	74.2	2.5	-3.8
Wholesale Trade	10.0	9.8	0.2	-1.2
Retail Trade	50.2	48.5	1.7	-1.6
Transp. & Utilities	16.5	15.9	0.6	-1.0
INFORMATION *	3.4	3.5	-0.1	-0.5
FINANCIAL ACTIVITIES	45.8	46.2	-0.4	-1.8
PROF. & BUS. SERVICES	58.1	58.2	-0.1	-6.9
EDUCATION & HEALTH	74.1	73.5	0.6	-7.1
LEISURE & HOSPITALITY	39.9	39.2	0.7	-13.9
OTHER SERVICES	16.2	15.9	0.3	-2.6
GOVERNMENT	66.2	65.2	1.0	-1.1
Federal Government	6.6	5.9	0.7	0.8
State Government	32.5	32.4	0.1	-0.8
Local Government	27.1	26.9	0.2	-1.1

* Industries are not seasonally adjusted.
† Annual changes are not seasonally adjusted.
Details may not add up due to rounding and seasonal adjustment.
Source: US Department of Labor, Bureau of Labor Statistics.

Delaware Over-the-Year Job Change

August 2019—August 2020



Consumer Price Index

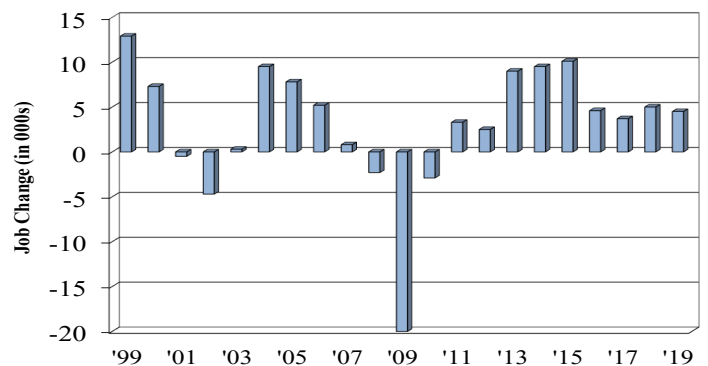
All Urban Consumers

	Percent Change to Aug. 2020 from:		
	Aug. 2019	June 2020	July 2020
US City Average	1.3	0.8	0.3
Phila.-Camden-Wilm.*	0.4	0.8	NA

* Data are published on a bi-monthly basis.

Delaware Annual Net Job Change

Annual Average 1999—2019



Office of Occupational and Labor Market Information

For data questions, contact Tom Dougherty (302) 761-8062

<https://lmi.delawareworks.com>