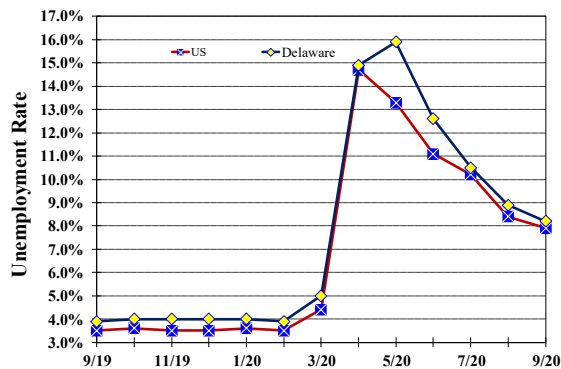


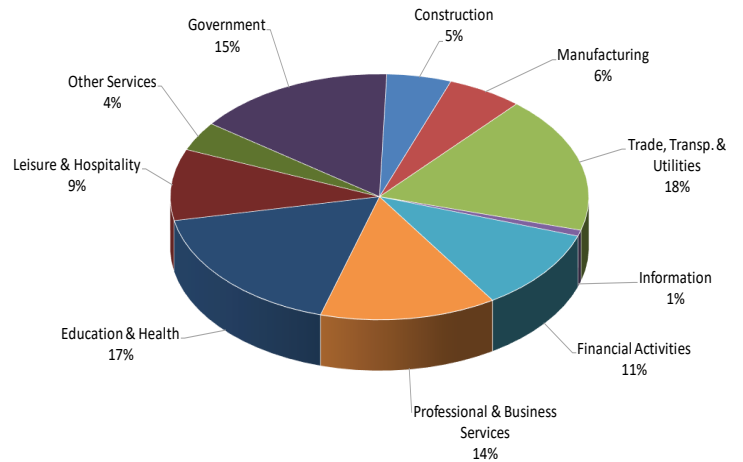
## Unemployment Rate

*Delaware and US*  
September 2019 - September 2020



## Percent Distribution of Delaware Nonfarm Employment

September 2020



## Delaware Civilian Labor Force

Delaware Residents

	Sept. 2020	Aug. 2020	Sept. 2019
Civilian Labor Force	495,300	500,900	488,700
Employed	454,900	456,200	469,400
Unemployed	40,400	44,700	19,300
Unemployment Rate %	8.2	8.9	3.9
US Unemployment Rate %	7.9	8.4	3.5

Source: Delaware Dept. of Labor in cooperation with the US Dept. of Labor, Bureau of Labor Statistics.

## Area Unemployment Rates (%)

	Sept. 2020	Aug. 2020	Sept. 2019
<b>New Castle County</b>	8.5	9.5	4.0
Wilmington	14.0	15.0	5.7
Newark	6.2	6.9	4.3
<b>Kent County</b>	8.6	9.8	4.3
Dover	12.1	13.4	5.7
<b>Sussex County</b>	6.8	7.6	3.5

Note: Area rates are not seasonally adjusted.

Source: Delaware Dept. of Labor in cooperation with the US Dept. of Labor, Bureau of Labor Statistics.

## Hours & Earnings

All Employee (Total Private)

	Sept. 2020	Aug. 2020	Sept. 2019
<b>Weekly Earnings</b>	\$923.72	\$945.62	\$923.33
<b>Weekly Hours</b>	32.4	32.8	33.6
<b>Hourly Earnings</b>	\$28.51	\$28.83	\$27.48

# Delaware Labor Force Trends

Delaware's seasonally adjusted unemployment rate in September 2020 was 8.2%, down from 8.9% in August 2020. There were 40,400 unemployed Delawareans in September 2020 compared to 19,300 in September 2019. The US unemployment rate was 7.9% in September 2020, down from 8.4% in August 2020. In September 2019, the US unemployment rate was 3.5%, while Delaware's rate was 3.9%.

In September 2020, seasonally adjusted nonfarm employment was 428,800 up from 426,700 in August 2020. Since September 2019, Delaware's total nonfarm jobs have decreased by a net loss of 37,500, a decline of 8.0%. Nationally, jobs during that period declined 6.4%.

## Delaware Nonfarm Employment

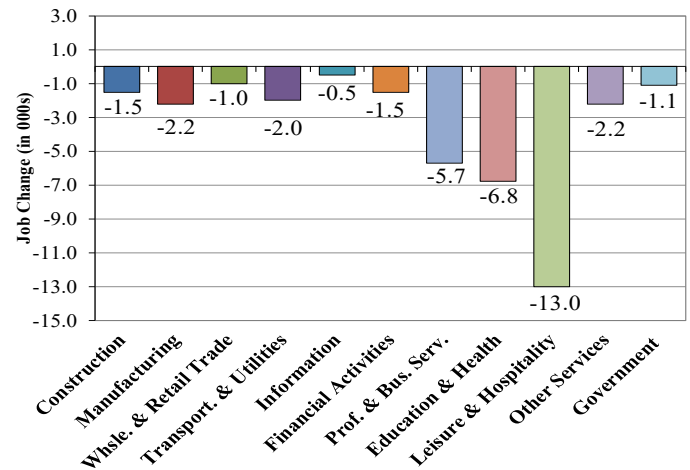
*Jobs at Delaware Locations*  
Seasonally Adjusted (in 000s)

INDUSTRY GROUP	Sept. 2020	Aug. 2020	Over the Month Change	Over the Year Change†
TOTAL NONAG. EMP.	428.8	426.7	2.1	-37.5
CONSTRUCTION	21.4	21.3	0.1	-1.5
MANUFACTURING	25.0	25.0	0.0	-2.2
Durable Goods	8.7	8.7	0.0	-1.1
Nondurable Goods	16.3	16.3	0.0	-1.1
TRADE, TRANSP., & UTIL.	77.3	76.6	0.7	-3.0
Wholesale Trade	10.0	9.9	0.1	-1.0
Retail Trade	51.9	50.2	1.7	0.0
Transp. & Utilities	15.4	16.5	-1.1	-2.0
INFORMATION *	3.4	3.4	0.0	-0.5
FINANCIAL ACTIVITIES	46.0	46.2	-0.2	-1.5
PROF. & BUS. SERVICES	58.4	58.4	0.0	-5.7
EDUCATION & HEALTH	74.3	74.3	0.0	-6.8
LEISURE & HOSPITALITY	40.3	39.2	1.1	-13.0
OTHER SERVICES	16.5	16.2	0.3	-2.2
GOVERNMENT	66.2	66.1	0.1	-1.1
Federal Government	6.6	6.6	0.0	0.8
State Government	32.0	32.3	-0.3	-1.4
Local Government	27.6	27.2	0.4	-0.5

\* Industries are not seasonally adjusted.  
† Annual changes are not seasonally adjusted.  
Details may not add up due to rounding and seasonal adjustment.  
Source: US Department of Labor, Bureau of Labor Statistics.

## Delaware Over-the-Year Job Change

September 2019—September 2020



## Consumer Price Index

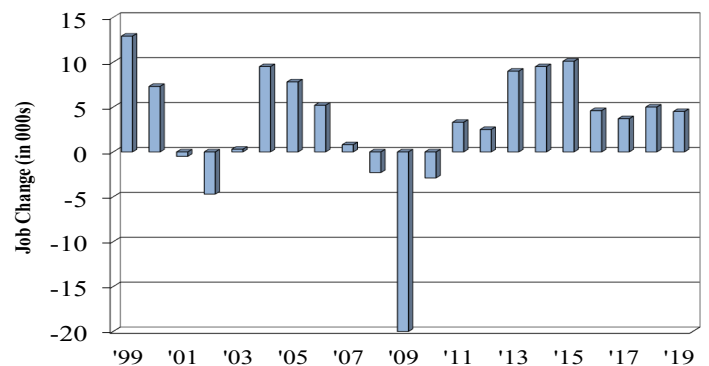
All Urban Consumers

	Percent Change to Sept. 2020 from:		
	Sept. 2019	July 2020	Aug. 2020
<b>US City Average</b>	1.4	0.5	0.1
<b>Phila.-Camden-Wilm.*</b>	NA	NA	NA

\* Data are published on a bi-monthly basis.

## Delaware Annual Net Job Change

Annual Average 1999—2019



Office of Occupational and Labor Market Information

For data questions, contact Tom Dougherty (302) 761-8062

<https://lmi.delawareworks.com>