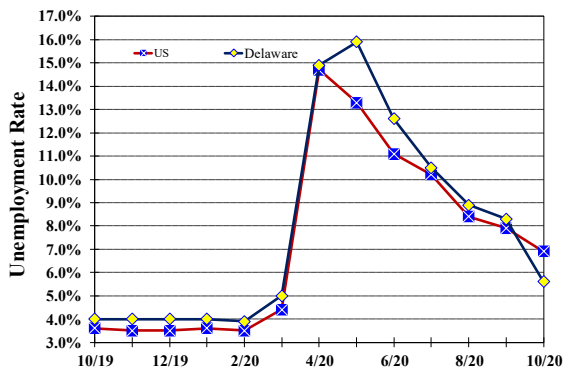


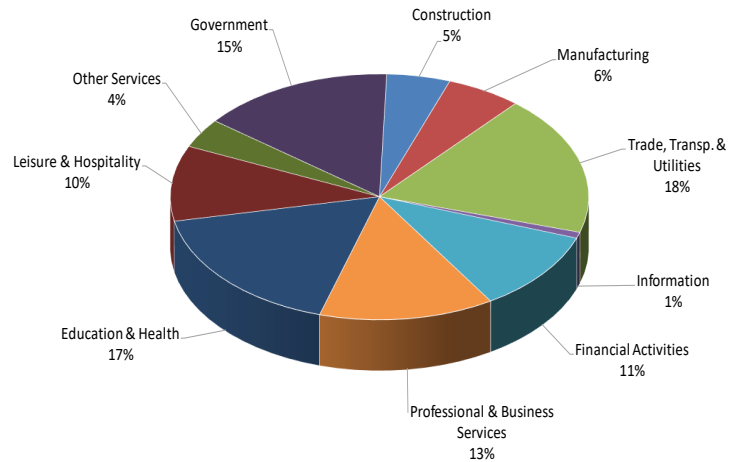
Unemployment Rate

Delaware and US
October 2019 - October 2020



Percent Distribution of Delaware Nonfarm Employment

October 2020



Delaware Civilian Labor Force

Delaware Residents

	Oct. 2020	Sept. 2020	Oct. 2019
Civilian Labor Force	479,100	487,800	489,000
Employed	452,100	447,100	469,500
Unemployed	27,000	40,700	19,500
Unemployment Rate %	5.6	8.3	4.0
US Unemployment Rate %	6.9	7.9	3.6

Source: Delaware Dept. of Labor in cooperation with the US Dept. of Labor, Bureau of Labor Statistics.

Area Unemployment Rates (%)

	Oct. 2020	Sept. 2020	Oct. 2019
New Castle County	5.7	8.7	3.8
Wilmington	10.5	14.2	5.7
Newark	4.1	6.3	3.9
Kent County	5.9	8.8	4.2
Dover	8.7	12.4	5.7
Sussex County	4.6	7.0	3.6

Note: Area rates are not seasonally adjusted.

Source: Delaware Dept. of Labor in cooperation with the US Dept. of Labor, Bureau of Labor Statistics.

Hours & Earnings

All Employee (Total Private)

	Oct. 2020	Sept. 2020	Oct. 2019
Weekly Earnings	\$945.43	\$928.20	\$897.60
Weekly Hours	32.4	32.5	33.0
Hourly Earnings	\$29.18	\$28.56	\$27.20

Delaware Labor Force Trends

Delaware's seasonally adjusted unemployment rate in October 2020 was 5.6%, down from 8.3% in September 2020. There were 27,000 unemployed Delawareans in October 2020 compared to 19,500 in October 2019. The US unemployment rate was 6.9% in October 2020, down from 7.9% in September 2020. In October 2019, the US unemployment rate was 3.6%, while Delaware's rate was 4.0%.

In October 2020, seasonally adjusted nonfarm employment was 430,100, up from 426,900 in September 2020. Since October 2019, Delaware's total nonfarm jobs have decreased by a net loss of 36,000, a decline of 7.7%. Nationally, jobs during that period declined 6%.

Delaware Nonfarm Employment

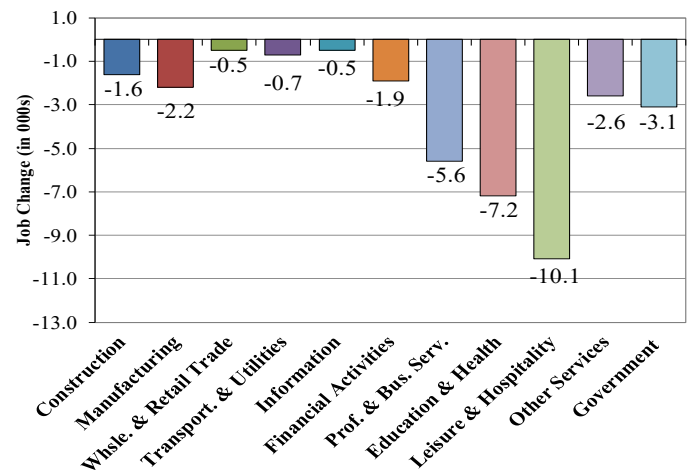
Jobs at Delaware Locations
Seasonally Adjusted (in 000s)

INDUSTRY GROUP	Oct. 2020	Sept. 2020	Over the Month Change	Over the Year Change†
TOTAL NONAG. EMP.	430.1	426.9	3.2	-36.0
CONSTRUCTION	21.1	21.4	-0.3	-1.6
MANUFACTURING	25.0	25.0	0.0	-2.2
Durable Goods	8.7	8.7	0.0	-1.1
Nondurable Goods	16.3	16.3	0.0	-1.1
TRADE, TRANSP., & UTIL.	79.2	77.4	1.8	-1.2
Wholesale Trade	10.4	10.0	0.4	-0.7
Retail Trade	52.4	51.9	0.5	0.2
Transp. & Utilities	16.4	15.5	0.9	-0.7
INFORMATION *	3.4	3.4	0.0	-0.5
FINANCIAL ACTIVITIES	45.7	46.0	-0.3	-1.9
PROF. & BUS. SERVICES	58.1	57.9	0.2	-5.6
EDUCATION & HEALTH	73.9	73.8	0.1	-7.2
LEISURE & HOSPITALITY	42.7	40.4	2.3	-10.1
OTHER SERVICES	16.6	16.3	0.3	-2.6
GOVERNMENT	64.4	65.3	-0.9	-3.1
Federal Government	6.1	6.6	-0.5	0.4
State Government	31.5	31.9	-0.4	-2.1
Local Government	26.8	26.8	0.0	-1.4

* Industries are not seasonally adjusted.
† Annual changes are not seasonally adjusted.
Details may not add up due to rounding and seasonal adjustment.
Source: US Department of Labor, Bureau of Labor Statistics.

Delaware Over-the-Year Job Change

October 2019—October 2020



Consumer Price Index

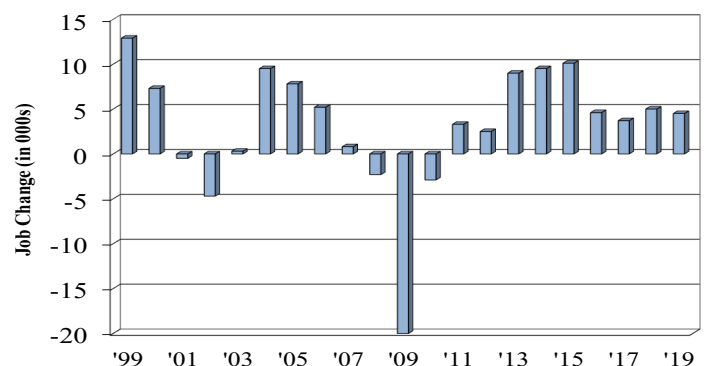
All Urban Consumers

	Percent Change to Oct. 2020 from:		
	Oct. 2019	Aug. 2020	Sept. 2020
US City Average	1.2	0.2	0.0
Phila.-Camden-Wilm.*	0.8	0.0	NA

* Data are published on a bi-monthly basis.

Delaware Annual Net Job Change

Annual Average 1999—2019



Office of Occupational and Labor Market Information

For data questions, contact Tom Dougherty (302) 761-8062

<https://lmi.delawareworks.com>