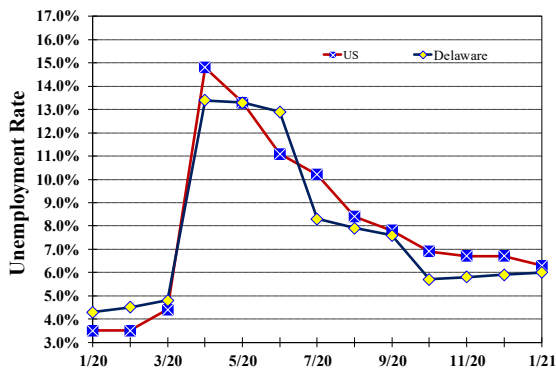


**Unemployment Rate**

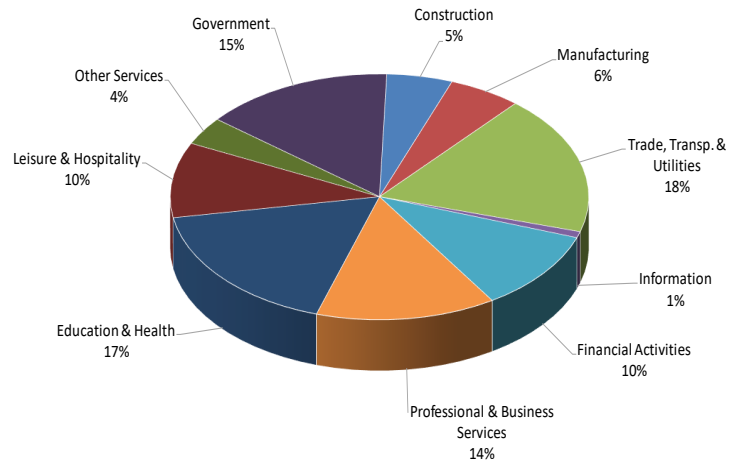
*Delaware and US*

January 2020 - January 2021



**Percent Distribution of Delaware Nonfarm Employment**

January 2021



**Delaware Civilian Labor Force**

Delaware Residents

	Jan. 2021	Dec. 2020	Jan. 2020
Civilian Labor Force	487,500	481,800	493,300
Employed	458,000	453,600	472,300
Unemployed	29,500	28,200	21,000
Unemployment Rate %	6.0	5.9	4.3
US Unemployment Rate %	6.3	6.7	3.5

Source: Delaware Dept. of Labor in cooperation with the US Dept. of Labor, Bureau of Labor Statistics.

**Area Unemployment Rates (%)**

	Jan. 2021	Dec. 2020	Jan. 2020
<b>New Castle County</b>	6.3	5.7	4.3
Wilmington	10.3	10.0	6.5
Newark	5.1	4.2	3.9
<b>Kent County</b>	7.1	6.3	5.0
Dover	10.1	9.0	6.1
<b>Sussex County</b>	6.2	5.4	5.3

Note: Area rates are not seasonally adjusted.

Source: Delaware Dept. of Labor in cooperation with the US Dept. of Labor, Bureau of Labor Statistics.

**Hours & Earnings**

All Employee (Total Private)

	Jan. 2021	Dec. 2020	Jan. 2020
<b>Weekly Earnings</b>	\$931.22	\$936.38	\$906.18
<b>Weekly Hours</b>	32.2	32.2	32.1
<b>Hourly Earnings</b>	\$28.92	\$29.08	\$28.23

# Delaware Labor Force Trends

Delaware's seasonally adjusted unemployment rate in January 2021 was 6.0%, up from 5.9% in December 2020. There were 29,500 unemployed Delawareans in January 2021 compared to 21,000 in January 2020. The US unemployment rate was 6.3% in January 2021, down from 6.7% in December 2020. In January 2020, the US unemployment rate was 3.5%, while Delaware's rate was 4.3%.

In January 2021, seasonally adjusted nonfarm employment was 444,500 up from 442,300 in December 2020. Since January 2020, Delaware's total nonfarm jobs have decreased by a net loss of 23,000, a decline of 5%. Nationally, jobs during that period declined 6.1%.

## Delaware Nonfarm Employment

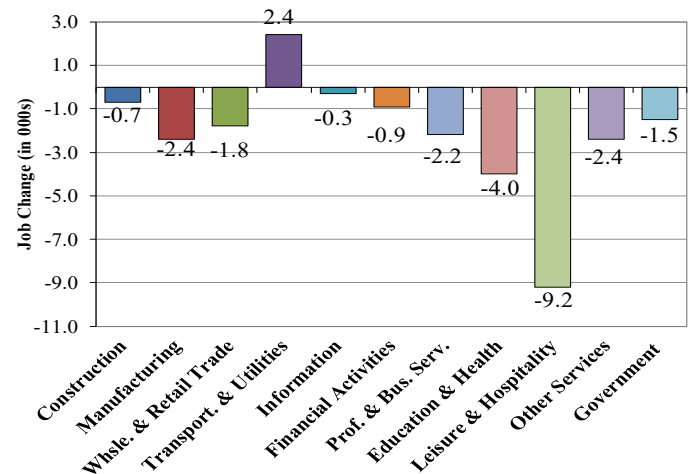
*Jobs at Delaware Locations*  
Seasonally Adjusted (in 000s)

INDUSTRY GROUP	Jan. 2021	Dec. 2020	Over the Month Change	Over the Year Change†
TOTAL NONAG. EMP.	444.5	442.3	2.2	-23.0
CONSTRUCTION	22.6	22.5	0.1	-0.7
MANUFACTURING	25.0	25.2	-0.2	-2.4
Durable Goods	9.1	9.1	0.0	-1.1
Nondurable Goods	15.9	16.1	-0.2	-1.3
TRADE, TRANSP., & UTIL.	81.5	81.9	-0.4	0.6
Wholesale Trade	11.3	11.3	0.0	0.2
Retail Trade	49.3	49.5	-0.2	-2.0
Transp. & Utilities	20.9	21.1	-0.2	2.4
INFORMATION *	3.6	3.5	0.1	-0.3
FINANCIAL ACTIVITIES	46.9	46.5	0.4	-0.9
PROF. & BUS. SERVICES	61.8	60.6	1.2	-2.2
EDUCATION & HEALTH	77.3	77.7	-0.4	-4.0
LEISURE & HOSPITALITY	44.0	43.6	0.4	-9.2
OTHER SERVICES	16.4	15.9	0.5	-2.4
GOVERNMENT	65.4	64.9	0.5	-1.5
Federal Government	5.9	5.9	0.0	0.0
State Government	32.1	31.8	0.3	-0.7
Local Government	27.4	27.2	0.2	-0.8

\* Industries are not seasonally adjusted.  
† Annual changes are not seasonally adjusted.  
Details may not add up due to rounding and seasonal adjustment.  
Source: US Department of Labor, Bureau of Labor Statistics.

## Delaware Over-the-Year Job Change

January 2020—January 2021



## Consumer Price Index

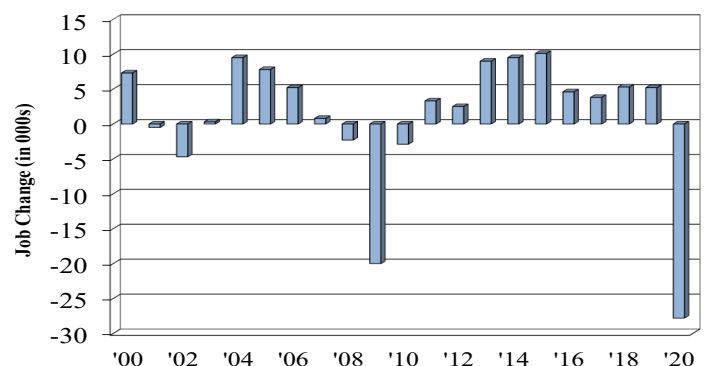
All Urban Consumers

	Percent Change to Jan. 2021 from:		
	Jan. 2020	Nov. 2020	Dec. 2020
<b>US City Average</b>	1.4	0.5	0.4
<b>Phila.-Camden-Wilm.*</b>	NA	NA	NA

\* Data are published on a bi-monthly basis.

## Delaware Annual Net Job Change

Annual Average 2000—2020



Office of Occupational and Labor Market Information

For data questions, contact Tom Dougherty (302) 761-8062

<https://lmi.delawareworks.com>