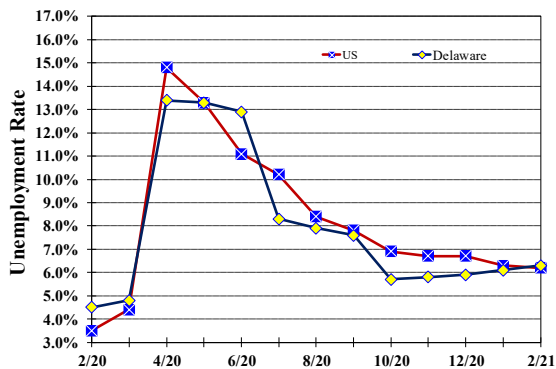


Unemployment Rate

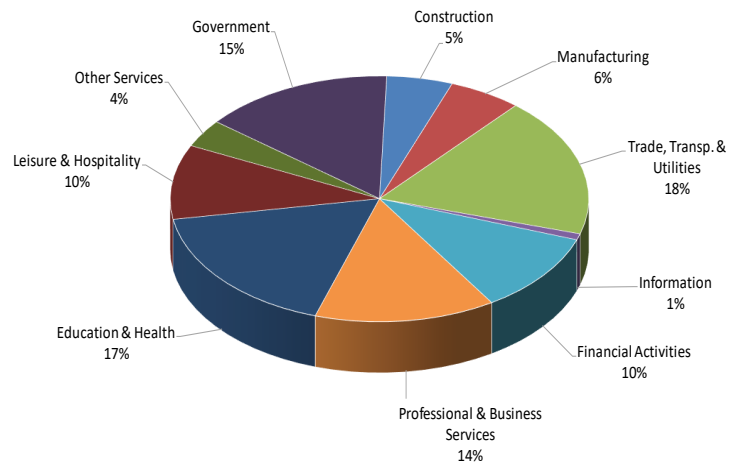
Delaware and US

February 2020 - February 2021



Percent Distribution of Delaware Nonfarm Employment

February 2021



Delaware Civilian Labor Force

Delaware Residents

	Feb. 2021	Jan. 2021	Feb. 2020
Civilian Labor Force	488,900	487,400	494,100
Employed	457,900	457,900	471,900
Unemployed	31,000	29,500	22,200
Unemployment Rate %	6.3	6.1	4.5
US Unemployment Rate %	6.2	6.3	3.5

Source: Delaware Dept. of Labor in cooperation with the US Dept. of Labor, Bureau of Labor Statistics.

Area Unemployment Rates (%)

	Feb. 2021	Jan. 2021	Feb. 2020
New Castle County	6.5	6.3	4.2
Wilmington	10.7	10.4	6.3
Newark	4.9	5.0	3.1
Kent County	7.5	7.1	4.9
Dover	10.4	10.1	6.1
Sussex County	6.5	6.2	5.2

Note: Area rates are not seasonally adjusted.

Source: Delaware Dept. of Labor in cooperation with the US Dept. of Labor, Bureau of Labor Statistics.

Hours & Earnings

All Employee (Total Private)

	Feb. 2021	Jan. 2021	Feb. 2020
Weekly Earnings	\$926.06	\$936.68	\$907.85
Weekly Hours	31.9	32.4	32.4
Hourly Earnings	\$29.03	\$28.91	\$28.02

Delaware Labor Force Trends

Delaware's seasonally adjusted unemployment rate in February 2021 was 6.3%, up from 6.1% in January 2021. There were 31,000 unemployed Delawareans in February 2021 compared to 22,200 in February 2020. The US unemployment rate was 6.2% in February 2021, down from 6.3% in January 2021. In February 2020, the US unemployment rate was 3.5%, while Delaware's rate was 4.5%.

In February 2021, seasonally adjusted nonfarm employment was 443,500 up from 443,300 in January 2021. Since February 2020, Delaware's total nonfarm jobs have decreased by a net loss of 24,300, a decline of 5.3%. Nationally, jobs during that period declined 6.0%.

Delaware Nonfarm Employment

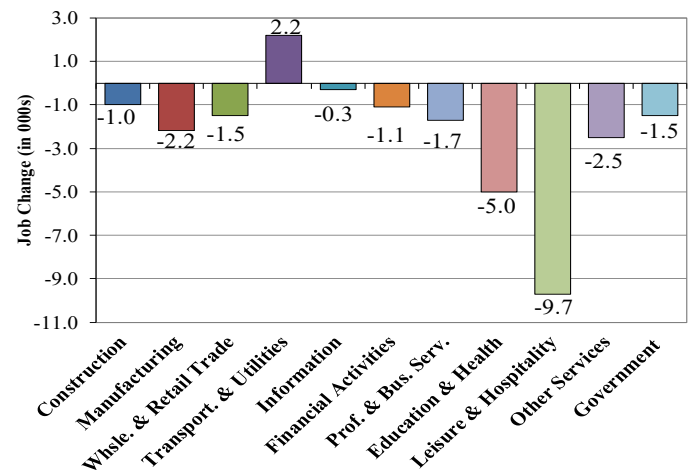
Jobs at Delaware Locations
Seasonally Adjusted (in 000s)

INDUSTRY GROUP	Feb. 2021	Jan. 2021	Over the Month Change	Over the Year Change†
TOTAL NONAG. EMP.	443.5	443.3	0.2	-24.3
CONSTRUCTION	22.6	22.5	0.1	-1.0
MANUFACTURING	25.0	25.0	0.0	-2.2
Durable Goods	9.0	9.0	0.0	-1.1
Nondurable Goods	16.0	16.0	0.0	-1.1
TRADE, TRANSP., & UTIL.	81.3	80.9	0.4	0.7
Wholesale Trade	11.2	11.1	0.1	0.1
Retail Trade	49.4	49.0	0.4	-1.6
Transp. & Utilities	20.7	20.8	-0.1	2.2
INFORMATION	3.6	3.6	0.0	-0.3
FINANCIAL ACTIVITIES	46.9	47.0	-0.1	-1.1
PROF. & BUS. SERVICES	61.9	61.6	0.3	-1.7
EDUCATION & HEALTH	76.9	77.0	-0.1	-5.0
LEISURE & HOSPITALITY	43.5	44.1	-0.6	-9.7
OTHER SERVICES	16.2	16.3	-0.1	-2.5
GOVERNMENT	65.6	65.3	0.3	-1.5
Federal Government	6.0	5.8	0.2	0.1
State Government	32.3	32.1	0.2	-0.6
Local Government	27.3	27.4	-0.1	-1.0

† Annual changes are not seasonally adjusted.
Details may not add up due to rounding and seasonal adjustment.
Source: US Department of Labor, Bureau of Labor Statistics.

Delaware Over-the-Year Job Change

February 2020—February 2021



Consumer Price Index

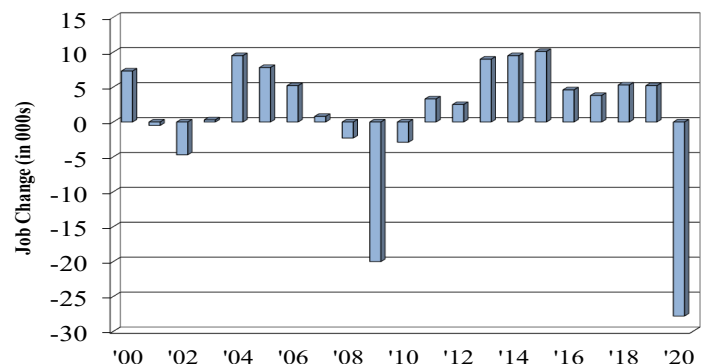
All Urban Consumers

	Percent Change to Feb. 2021 from:		
	Feb. 2020	Dec. 2020	Jan. 2021
US City Average	1.7	1.0	0.5
Phila.-Camden-Wilm.*	1.0	0.8	NA

* Data are published on a bi-monthly basis.

Delaware Annual Net Job Change

Annual Average 2000—2020



Office of Occupational and Labor Market Information

For data questions, contact Tom Dougherty (302) 761-8062

<https://lmi.delawareworks.com>