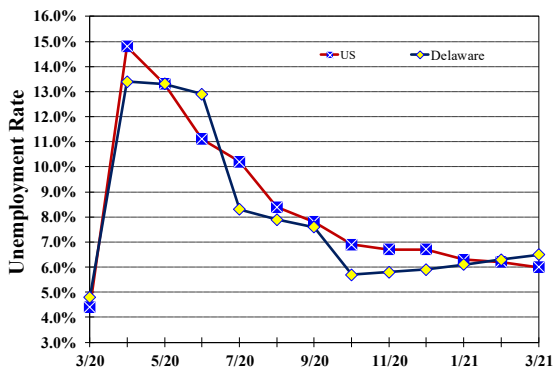


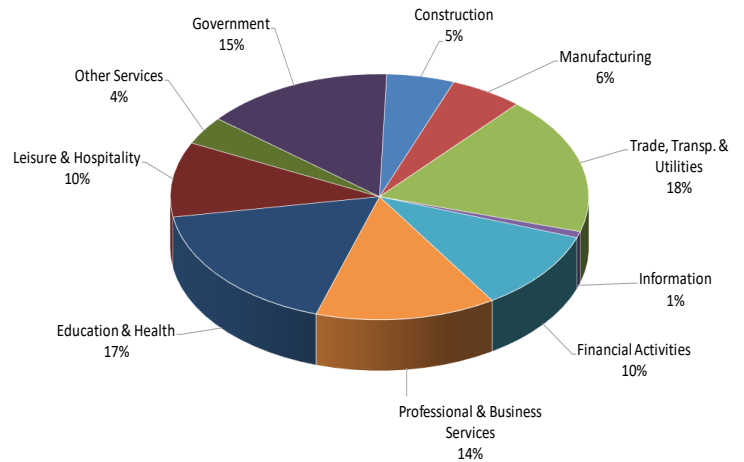
Unemployment Rate

Delaware and US
March 2020 - March 2021



Percent Distribution of Delaware Nonfarm Employment

March 2021



Delaware Civilian Labor Force

Delaware Residents

	Mar. 2021	Feb. 2021	Mar. 2020
Civilian Labor Force	489,400	488,800	481,300
Employed	457,800	457,800	458,200
Unemployed	31,600	31,000	23,100
Unemployment Rate %	6.5	6.3	4.8
US Unemployment Rate %	6.0	6.2	4.4

Source: Delaware Dept. of Labor in cooperation with the US Dept. of Labor, Bureau of Labor Statistics.

Area Unemployment Rates (%)

	Mar. 2021	Feb. 2021	Mar. 2020
New Castle County	6.5	6.5	4.9
Wilmington	10.3	10.6	7.1
Newark	5.6	4.8	5.2
Kent County	7.5	7.5	5.8
Dover	10.3	10.4	8.0
Sussex County	6.4	6.5	5.7

Note: Area rates are not seasonally adjusted.

Source: Delaware Dept. of Labor in cooperation with the US Dept. of Labor, Bureau of Labor Statistics.

Hours & Earnings

All Employee (Total Private)

	Mar. 2021	Feb. 2021	Mar. 2020
Weekly Earnings	\$952.22	\$937.28	\$911.83
Weekly Hours	32.7	32.0	32.3
Hourly Earnings	\$29.12	\$29.29	\$28.23

Delaware Labor Force Trends

Delaware's seasonally adjusted unemployment rate in March 2021 was 6.5%, up from 6.3% in February 2021. There were 31,600 unemployed Delawareans in March 2021 compared to 23,100 in March 2020. The US unemployment rate was 6.0% in March 2021, down from 6.2% in February 2021. In March 2020, the US unemployment rate was 4.4%, while Delaware's rate was 4.8%.

In March 2021, seasonally adjusted nonfarm employment was 445,200 up from 442,900 in February 2021. Since March 2020, Delaware's total nonfarm jobs have decreased by a net loss of 20,100, a decline of 4.4%. Nationally, jobs during that period also declined 4.4%.

Delaware Nonfarm Employment

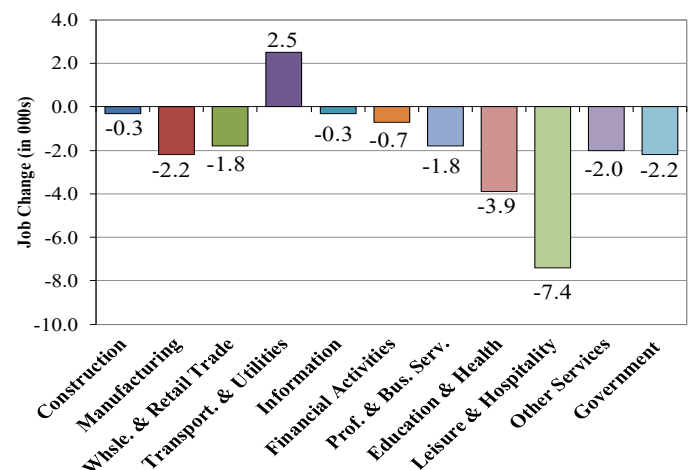
Jobs at Delaware Locations
Seasonally Adjusted (in 000s)

INDUSTRY GROUP	Mar. 2021	Feb. 2021	Over the Month Change	Over the Year Change†
TOTAL NONAG. EMP.	445.2	442.9	2.3	-20.1
CONSTRUCTION	23.3	22.7	0.6	-0.3
MANUFACTURING	25.0	24.8	0.2	-2.2
Durable Goods	8.8	8.9	-0.1	-1.3
Nondurable Goods	16.2	15.9	0.3	-0.9
TRADE, TRANSP., & UTIL.	81.0	81.4	-0.4	0.7
Wholesale Trade	11.3	11.2	0.1	0.2
Retail Trade	48.9	49.0	-0.1	-2.0
Transp. & Utilities	20.8	21.2	-0.4	2.5
INFORMATION	3.6	3.6	0.0	-0.3
FINANCIAL ACTIVITIES	47.0	46.8	0.2	-0.7
PROF. & BUS. SERVICES	62.0	61.5	0.5	-1.8
EDUCATION & HEALTH	77.7	76.8	0.9	-3.9
LEISURE & HOSPITALITY	43.9	43.4	0.5	-7.4
OTHER SERVICES	16.6	16.3	0.3	-2.0
GOVERNMENT	65.1	65.6	-0.5	-2.2
Federal Government	5.8	6.0	-0.2	0.0
State Government	32.0	32.3	-0.3	-1.1
Local Government	27.3	27.3	0.0	-1.1

† Annual changes are not seasonally adjusted.
Details may not add up due to rounding and seasonal adjustment.
Source: US Department of Labor, Bureau of Labor Statistics.

Delaware Over-the-Year Job Change

March 2020—March 2021



Consumer Price Index

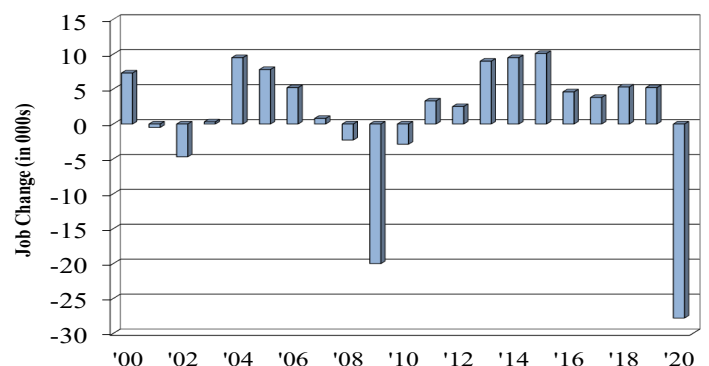
All Urban Consumers

	Percent Change to Mar. 2021 from:		
	Mar. 2020	Jan. 2021	Feb. 2021
US City Average	2.6	1.3	0.7
Phila.-Camden-Wilm.*	NA	NA	NA

* Data are published on a bi-monthly basis.

Delaware Annual Net Job Change

Annual Average 2000—2020



Office of Occupational and Labor Market Information

For data questions, contact Tom Dougherty (302) 761-8062

<https://lmi.delawareworks.com>