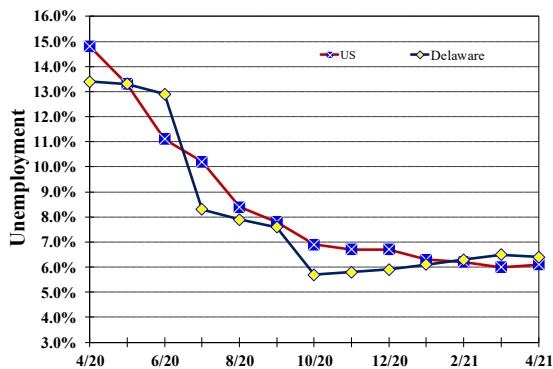


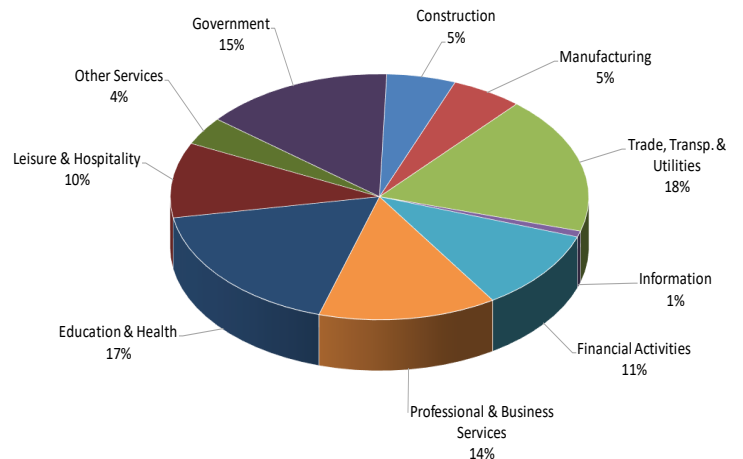
Unemployment Rate

Delaware and US
April 2020 - April 2021



Percent Distribution of Delaware Nonfarm Employment

April 2021



Delaware Civilian Labor Force

Delaware Residents

	Apr. 2021	Mar. 2021	Apr. 2020
Civilian Labor Force	489,300	489,300	474,500
Employed	458,200	457,700	411,000
Unemployed	31,100	31,600	63,500
Unemployment Rate %	6.4	6.5	13.4
US Unemployment Rate %	6.1	6.0	14.8

Source: Delaware Dept. of Labor in cooperation with the US Dept. of Labor, Bureau of Labor Statistics.

Area Unemployment Rates (%)

	Apr. 2021	Mar. 2021	Apr. 2020
New Castle County	6.0	6.5	12.6
Wilmington	10.0	10.2	15.9
Newark	4.5	5.5	8.7
Kent County	7.0	7.4	14.3
Dover	10.0	10.1	17.3
Sussex County	5.6	6.3	14.7

Note: Area rates are not seasonally adjusted.

Source: Delaware Dept. of Labor in cooperation with the US Dept. of Labor, Bureau of Labor Statistics.

Hours & Earnings

All Employee (Total Private)

	Apr. 2021	Mar. 2021	Apr. 2020
Weekly Earnings	\$951.80	\$946.99	\$960.60
Weekly Hours	32.9	32.7	32.3
Hourly Earnings	\$28.93	\$28.96	\$29.74

Delaware Labor Force Trends

Delaware's seasonally adjusted unemployment rate in April 2021 was 6.4%, down from 6.5% in March 2021. There were 31,100 unemployed Delawareans in April 2021 compared to 63,500 in April 2020. The US unemployment rate was 6.1% in April 2021, up from 6.0% in March 2021. In April 2020, the US unemployment rate was 14.8%, while Delaware's rate was 13.4%.

In April 2021, seasonally adjusted nonfarm employment was 444,300 up from 444,100 in March 2021. Since April 2020, Delaware's total nonfarm jobs have increased by a net gain of 44,800, a rise of 11.3%. Nationally, jobs during that period increased 10.9%.

Delaware Nonfarm Employment

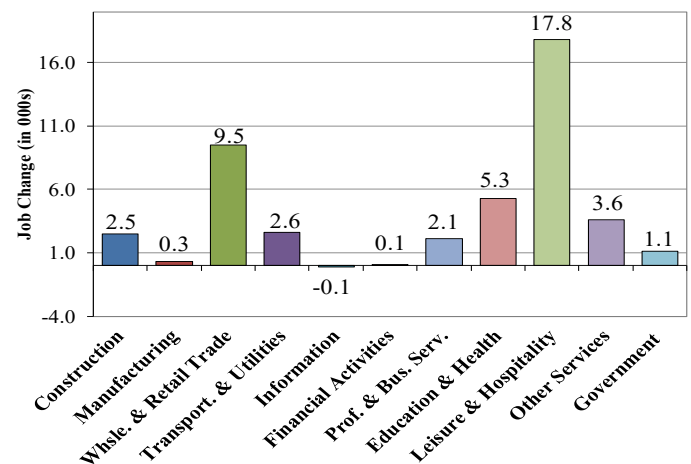
Jobs at Delaware Locations
Seasonally Adjusted (in 000s)

INDUSTRY GROUP	Apr. 2021	Mar. 2021	Over the Month Change	Over the Year Change†
TOTAL NONAG. EMP.	444.3	444.1	0.2	44.8
CONSTRUCTION	23.7	23.6	0.1	2.5
MANUFACTURING	24.4	24.8	-0.4	0.3
Durable Goods	8.7	8.7	0.0	0.2
Nondurable Goods	15.7	16.1	-0.4	0.1
TRADE, TRANSP., & UTIL.	80.6	81.0	-0.4	12.1
Wholesale Trade	11.4	11.3	0.1	1.0
Retail Trade	49.1	49.0	0.1	8.5
Transp. & Utilities	20.1	20.7	-0.6	2.6
INFORMATION	3.5	3.6	-0.1	-0.1
FINANCIAL ACTIVITIES	47.1	46.9	0.2	0.1
PROF. & BUS. SERVICES	61.1	61.2	-0.1	2.1
EDUCATION & HEALTH	78.1	77.6	0.5	5.3
LEISURE & HOSPITALITY	44.0	43.9	0.1	17.8
OTHER SERVICES	16.5	16.6	-0.1	3.6
GOVERNMENT	65.3	64.9	0.4	1.1
Federal Government	5.9	5.8	0.1	0.1
State Government	31.9	31.7	0.2	-0.2
Local Government	27.5	27.4	0.1	1.2

† Annual changes are not seasonally adjusted.
Details may not add up due to rounding and seasonal adjustment.
Source: US Department of Labor, Bureau of Labor Statistics.

Delaware Over-the-Year Job Change

April 2020—April 2021



Consumer Price Index

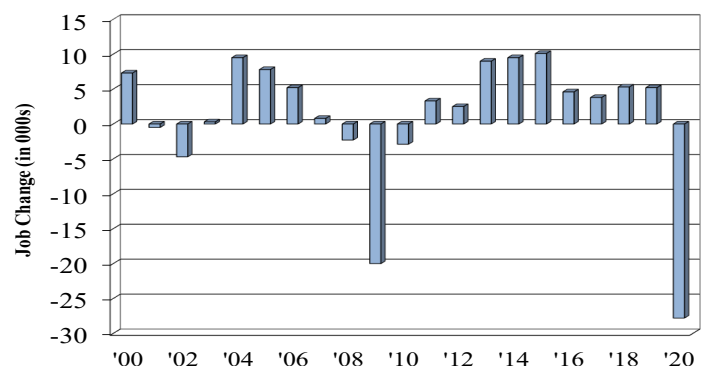
All Urban Consumers

	Percent Change to Apr. 2021 from:		
	Apr. 2020	Feb. 2021	Mar. 2021
US City Average	4.2	1.5	0.8
Phila.-Camden-Wilm.*	3.5	1.2	NA

* Data are published on a bi-monthly basis.

Delaware Annual Net Job Change

Annual Average 2000—2020



Office of Occupational and Labor Market Information

For data questions, contact Tom Dougherty (302) 761-8062

<https://labor.delaware.gov/divisions/oolmi/>