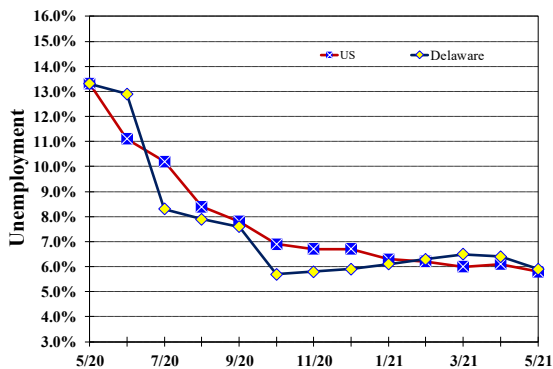


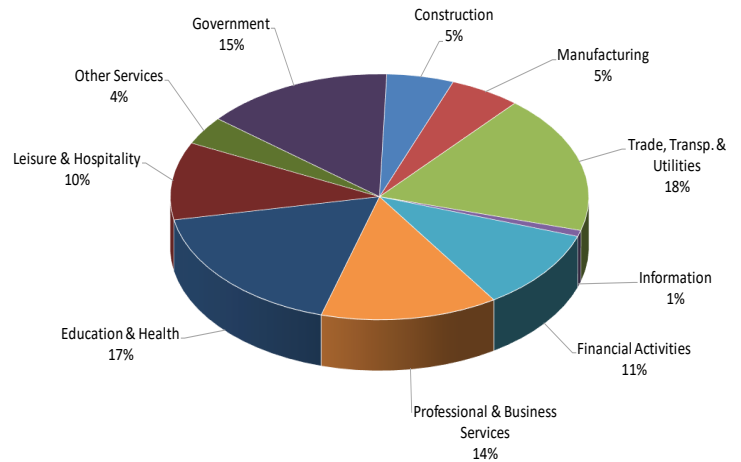
Unemployment Rate

Delaware and US
May 2020 - May 2021



Percent Distribution of Delaware Nonfarm Employment

May 2021



Delaware Civilian Labor Force

Delaware Residents

	May 2021	April 2021	May 2020
Civilian Labor Force	486,900	489,400	475,200
Employed	458,300	458,300	412,200
Unemployed	28,600	31,100	63,000
Unemployment Rate %	5.9	6.4	13.3
US Unemployment Rate %	5.8	6.1	13.3

Source: Delaware Dept. of Labor in cooperation with the US Dept. of Labor, Bureau of Labor Statistics.

Area Unemployment Rates (%)

	May 2021	Apr. 2021	May 2020
New Castle County	5.1	6.0	12.9
Wilmington	8.9	10.0	17.6
Newark	3.6	4.5	9.2
Kent County	6.2	7.0	14.9
Dover	9.5	10.3	19.0
Sussex County	4.4	5.6	14.3

Note: Area rates are not seasonally adjusted.

Source: Delaware Dept. of Labor in cooperation with the US Dept. of Labor, Bureau of Labor Statistics.

Hours & Earnings

All Employee (Total Private)

	May 2021	April 2021	May 2020
Weekly Earnings	\$971.69	\$947.92	\$965.03
Weekly Hours	33.3	32.8	33.3
Hourly Earnings	\$29.18	\$28.90	\$28.98

Delaware Labor Force Trends

Delaware's seasonally adjusted unemployment rate in May 2021 was 5.9%, down from 6.4% in April 2021. There were 28,600 unemployed Delawareans in May 2021 compared to 63,000 in May 2020. The US unemployment rate was 5.8% in May 2021, down from 6.1% in April 2021. In May 2020, the US unemployment rate was 13.3%. Delaware's rate during that period was also 13.3%.

In May 2021, seasonally adjusted nonfarm employment was 443,900 down from 445,300 in April 2021. Since May 2020, Delaware's total nonfarm jobs have increased by a net gain of 39,300, a rise of 9.7%. Nationally, jobs during that period increased 9.0 %.

Delaware Nonfarm Employment

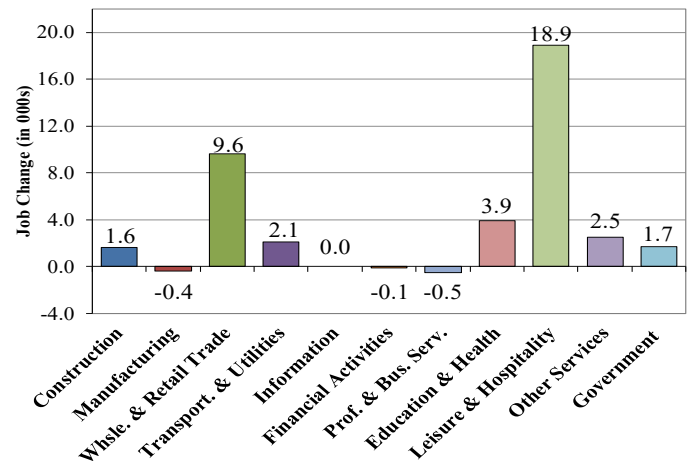
Jobs at Delaware Locations
Seasonally Adjusted (in 000s)

INDUSTRY GROUP	May 2021	April 2021	Over the Month Change	Over the Year Change†
TOTAL NONAG. EMP.	443.9	445.3	-1.4	39.3
CONSTRUCTION	23.0	23.7	-0.7	1.6
MANUFACTURING	24.3	24.4	-0.1	-0.4
Durable Goods	8.6	8.7	-0.1	-0.1
Nondurable Goods	15.7	15.7	0.0	-0.3
TRADE, TRANSP., & UTIL.	80.9	80.8	0.1	11.7
Wholesale Trade	11.1	11.4	-0.3	0.7
Retail Trade	49.5	49.1	0.4	8.9
Transp. & Utilities	20.3	20.3	0.0	2.1
INFORMATION	3.6	3.6	0.0	0.0
FINANCIAL ACTIVITIES	46.9	47.1	-0.2	-0.1
PROF. & BUS. SERVICES	60.7	61.6	-0.9	-0.5
EDUCATION & HEALTH	77.6	78.1	-0.5	3.9
LEISURE & HOSPITALITY	45.4	44.3	1.1	18.9
OTHER SERVICES	16.6	16.5	0.1	2.5
GOVERNMENT	64.9	65.2	-0.3	1.7
Federal Government	5.8	5.9	-0.1	0.0
State Government	31.8	31.8	0.0	1.0
Local Government	27.3	27.5	-0.2	0.7

† Annual changes are not seasonally adjusted.
Details may not add up due to rounding and seasonal adjustment.
Source: US Department of Labor, Bureau of Labor Statistics.

Delaware Over-the-Year Job Change

May 2020—May 2021



Consumer Price Index

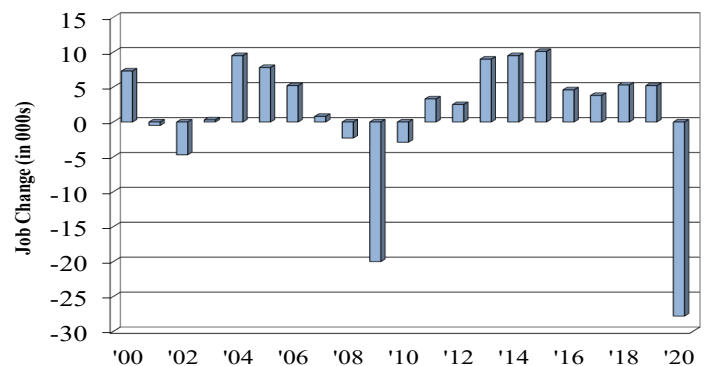
All Urban Consumers

	Percent Change to May 2021 from:		
	May 2020	March 2021	April 2021
US City Average	5.0	1.6	0.8
Phila.-Camden-Wilm.*	NA	NA	NA

* Data are published on a bi-monthly basis.

Delaware Annual Net Job Change

Annual Average 2000—2020



Office of Occupational and Labor Market Information

For data questions, contact Tom Dougherty (302) 761-8062

<https://labor.delaware.gov/divisions/oolmi/>