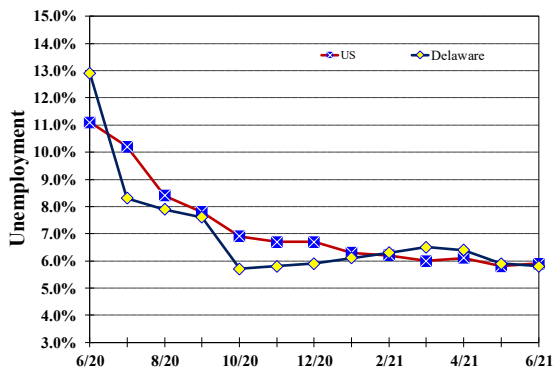


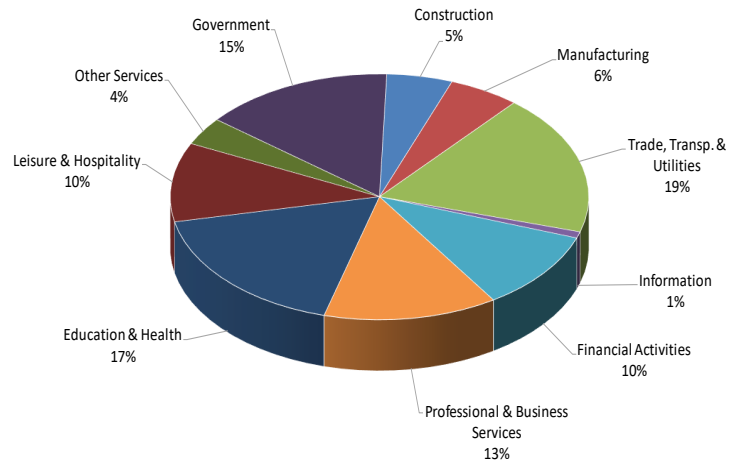
Unemployment Rate

Delaware and US
June 2020 - June 2021



Percent Distribution of Delaware Nonfarm Employment

June 2021



Delaware Civilian Labor Force

Delaware Residents

	June 2021	May 2021	June 2020
Civilian Labor Force	488,600	487,000	475,900
Employed	460,400	458,400	414,300
Unemployed	28,200	28,600	61,600
Unemployment Rate %	5.8	5.9	12.9
US Unemployment Rate %	5.9	5.8	11.1

Source: Delaware Dept. of Labor in cooperation with the US Dept. of Labor, Bureau of Labor Statistics.

Area Unemployment Rates (%)

	June 2021	May 2021	June 2020
New Castle County	5.9	5.1	13.4
Wilmington	9.5	9.0	19.5
Newark	3.5	3.5	9.7
Kent County	7.7	6.2	14.8
Dover	10.7	9.2	19.6
Sussex County	4.4	4.4	12.0

Note: Area rates are not seasonally adjusted.

Source: Delaware Dept. of Labor in cooperation with the US Dept. of Labor, Bureau of Labor Statistics.

Hours & Earnings

All Employee (Total Private)

	June 2021	May 2021	June 2020
Weekly Earnings	\$928.45	\$955.93	\$930.74
Weekly Hours	32.6	33.1	32.9
Hourly Earnings	\$28.48	\$28.88	\$28.29

Delaware Labor Force Trends

Delaware's seasonally adjusted unemployment rate in June 2021 was 5.8%, down from 5.9% in May 2021. There were 28,200 unemployed Delawareans in June 2021 compared to 61,600 in June 2020. The US unemployment rate was 5.9% in June 2021, up from 5.8% in May 2021. In June 2020, the US unemployment rate was 11.1%, while Delaware's rate was 12.9%.

In June 2021, seasonally adjusted nonfarm employment was 446,500 up from 444,100 in May 2021. Since June 2020, Delaware's total nonfarm jobs have increased by a net gain of 22,300, a rise of 5.2%. Nationally, jobs during that period increased 5.8%.

Delaware Nonfarm Employment

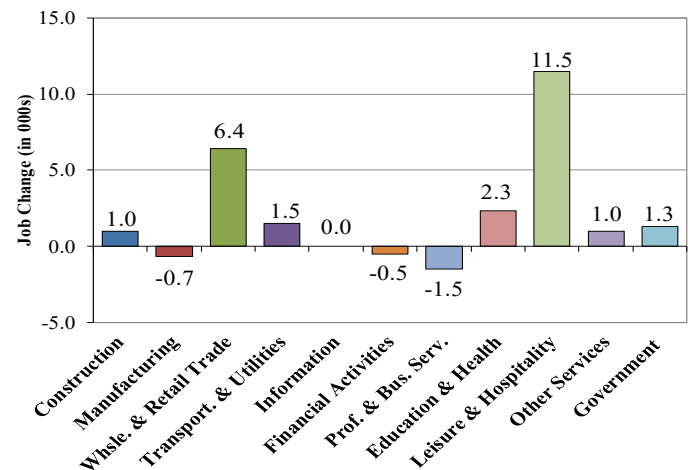
Jobs at Delaware Locations
Seasonally Adjusted (in 000s)

INDUSTRY GROUP	June 2021	May 2021	Over the Month Change	Over the Year Change†
TOTAL NONAG. EMP.	446.5	444.1	2.4	22.3
CONSTRUCTION	22.7	23.0	-0.3	1.0
MANUFACTURING	24.5	24.3	0.2	-0.7
Durable Goods	8.9	8.6	0.3	0.0
Nondurable Goods	15.6	15.7	-0.1	-0.7
TRADE, TRANSP., & UTIL.	82.6	81.1	1.5	7.9
Wholesale Trade	11.5	11.1	0.4	0.9
Retail Trade	50.7	49.7	1.0	5.5
Transp. & Utilities	20.4	20.3	0.1	1.5
INFORMATION	3.7	3.6	0.1	0.0
FINANCIAL ACTIVITIES	46.4	46.7	-0.3	-0.5
PROF. & BUS. SERVICES	59.9	60.8	-0.9	-1.5
EDUCATION & HEALTH	77.9	77.6	0.3	2.3
LEISURE & HOSPITALITY	46.5	45.2	1.3	11.5
OTHER SERVICES	16.4	16.6	-0.2	1.0
GOVERNMENT	65.9	65.2	0.7	1.3
Federal Government	5.9	5.8	0.1	0.1
State Government	32.2	31.8	0.4	0.3
Local Government	27.8	27.6	0.2	0.9

† Annual changes are not seasonally adjusted.
Details may not add up due to rounding and seasonal adjustment.
Source: US Department of Labor, Bureau of Labor Statistics.

Delaware Over-the-Year Job Change

June 2020—June 2021



Consumer Price Index

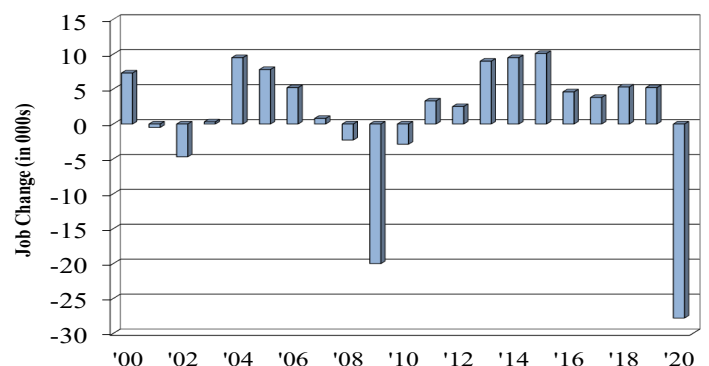
All Urban Consumers

	Percent Change to June 2021 from:		
	June 2020	April 2021	May 2021
US City Average	5.4	1.7	0.9
Phila.-Camden-Wilm.*	4.9	1.9	NA

* Data are published on a bi-monthly basis.

Delaware Annual Net Job Change

Annual Average 2000—2020



Office of Occupational and Labor Market Information

For data questions, contact Tom Dougherty (302) 761-8062

<https://labor.delaware.gov/divisions/oolmi/>