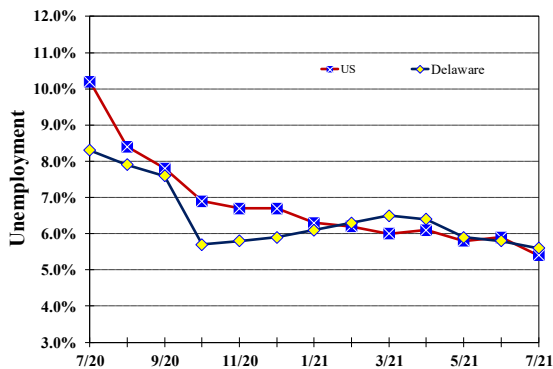


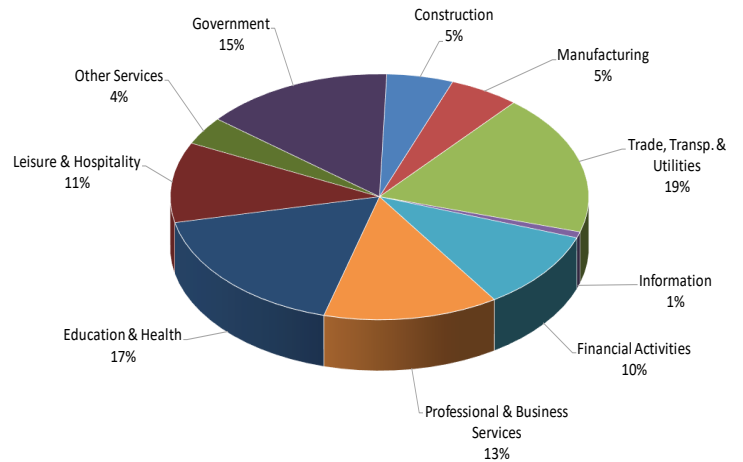
Unemployment Rate

Delaware and US
July 2020 - July 2021



Percent Distribution of Delaware Nonfarm Employment

July 2021



Delaware Civilian Labor Force

Delaware Residents

	July 2021	June 2021	July 2020
Civilian Labor Force	489,100	488,800	489,500
Employed	461,900	460,400	449,100
Unemployed	27,200	28,400	40,400
Unemployment Rate %	5.6	5.8	8.3
US Unemployment Rate %	5.4	5.9	10.2

Source: Delaware Dept. of Labor in cooperation with the US Dept. of Labor, Bureau of Labor Statistics.

Area Unemployment Rates (%)

	July 2021	June 2021	July 2020
New Castle County	5.6	5.9	8.8
Wilmington	8.8	9.6	13.6
Newark	4.3	3.7	7.1
Kent County	6.8	7.8	9.6
Dover	9.2	10.9	13.2
Sussex County	4.3	4.5	7.2

Note: Area rates are not seasonally adjusted.

Source: Delaware Dept. of Labor in cooperation with the US Dept. of Labor, Bureau of Labor Statistics.

Hours & Earnings

All Employee (Total Private)

	July 2021	June 2021	July 2020
Weekly Earnings	\$943.24	\$927.55	\$916.06
Weekly Hours	32.9	32.5	32.6
Hourly Earnings	\$28.67	\$28.54	\$28.10

Delaware Labor Force Trends

Delaware's seasonally adjusted unemployment rate in July 2021 was 5.6%, down from 5.8% in June 2021. There were 27,200 unemployed Delawareans in July 2021 compared to 40,400 in July 2020. The US unemployment rate was 5.4% in July 2021, down from 5.9% in June 2021. In July 2020, the US unemployment rate was 10.2%, while Delaware's rate was 8.3%.

In July 2021, seasonally adjusted nonfarm employment was 451,200 up from 447,300 in June 2021. Since July 2020, Delaware's total nonfarm jobs have increased by a net gain of 20,000, a rise of 4.6%. Nationally, jobs during that period increased 5.3%.

Delaware Nonfarm Employment

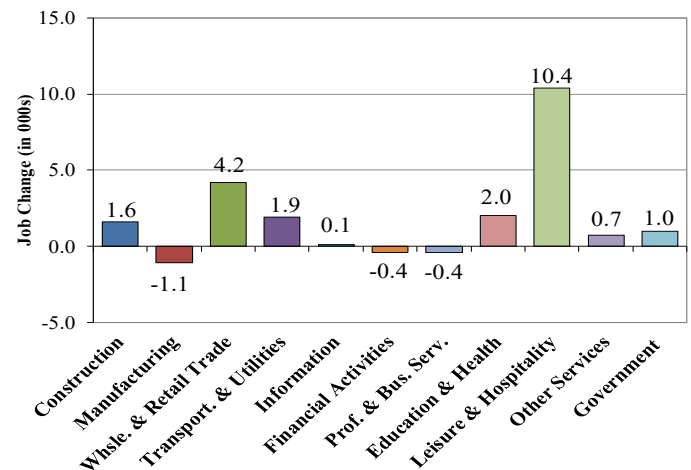
Jobs at Delaware Locations
Seasonally Adjusted (in 000s)

INDUSTRY GROUP	July 2021	June 2021	Over the Month Change	Over the Year Change†
TOTAL NONAG. EMP.	451.2	447.3	3.9	20.0
CONSTRUCTION	23.2	23.0	0.2	1.6
MANUFACTURING	24.4	24.5	-0.1	-1.1
Durable Goods	8.8	8.9	-0.1	-0.4
Nondurable Goods	15.6	15.6	0.0	-0.7
TRADE, TRANSP., & UTIL.	83.6	82.5	1.1	6.1
Wholesale Trade	11.5	11.4	0.1	0.7
Retail Trade	50.8	50.6	0.2	3.5
Transp. & Utilities	21.3	20.5	0.8	1.9
INFORMATION	3.6	3.6	0.0	0.1
FINANCIAL ACTIVITIES	46.6	46.3	0.3	-0.4
PROF. & BUS. SERVICES	61.0	60.3	0.7	-0.4
EDUCATION & HEALTH	78.2	78.1	0.1	2.0
LEISURE & HOSPITALITY	47.7	46.7	1.0	10.4
OTHER SERVICES	16.7	16.3	0.4	0.7
GOVERNMENT	66.2	66.0	0.2	1.0
Federal Government	5.9	5.9	0.0	0.0
State Government	32.3	32.2	0.1	0.0
Local Government	28.0	27.9	0.1	1.0

† Annual changes are not seasonally adjusted.
Details may not add up due to rounding and seasonal adjustment.
Source: US Department of Labor, Bureau of Labor Statistics.

Delaware Over-the-Year Job Change

July 2020—July 2021



Consumer Price Index

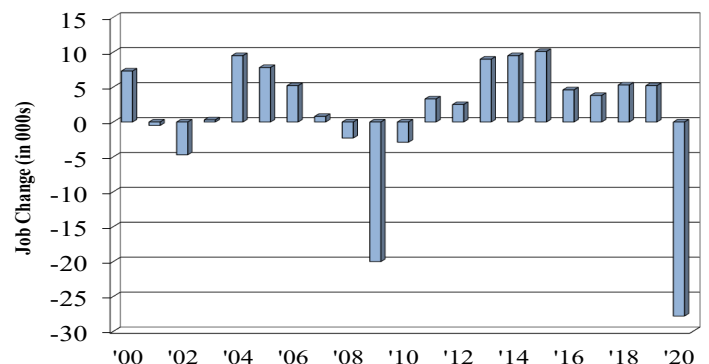
All Urban Consumers

	Percent Change to July 2021 from:		
	July 2020	May 2021	June 2021
US City Average	5.4	1.4	0.5
Phila.-Camden-Wilm.*	NA	NA	NA

* Data are published on a bi-monthly basis.

Delaware Annual Net Job Change

Annual Average 2000—2020



Office of Occupational and Labor Market Information

For data questions, contact Tom Dougherty (302) 761-8062

<https://labor.delaware.gov/divisions/oolmi/>