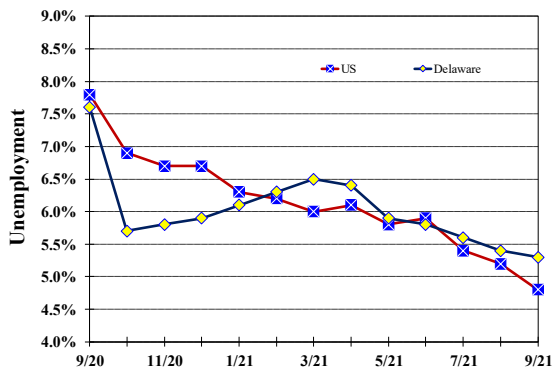


## Unemployment Rate

### Delaware and US September 2020 - September 2021



## Delaware Civilian Labor Force

### Delaware Residents

	Sept. 2021	Aug. 2021	Sept. 2020
Civilian Labor Force	488,800	488,900	490,900
Employed	462,700	462,500	453,400
Unemployed	26,100	26,400	37,500
Unemployment Rate %	5.3	5.4	7.6
US Unemployment Rate %	4.8	5.2	7.8

Source: Delaware Dept. of Labor in cooperation with the US Dept. of Labor, Bureau of Labor Statistics.

## Area Unemployment Rates (%)

	Sept. 2021	Aug. 2021	Sept. 2020
<b>New Castle County</b>	4.9	5.5	7.6
Wilmington	7.5	8.3	12.6
Newark	4.1	4.1	5.5
<b>Kent County</b>	5.6	6.3	8.0
Dover	7.7	8.6	11.4
<b>Sussex County</b>	4.4	4.3	6.1

Note: Area rates are not seasonally adjusted.

Source: Delaware Dept. of Labor in cooperation with the US Dept. of Labor, Bureau of Labor Statistics.

## Monthly Commentary

The federal government was offering \$300 per week unemployment benefits bonus in addition to Delaware's unemployment insurance payments that averaged about \$287 per week, but the federal unemployment benefits assistance related to the COVID-19 pandemic ended September 6th. The data in this September report was collected during the reference week that includes the 12th of the month, which is the week following the end of the federal benefit. It is unlikely that the full impact of the ending of the federal benefit on employment and unemployment would be captured in this report due to the time-consuming hiring process.

## Hours & Earnings

### All Employee (Total Private)

	Sept. 2021	Aug. 2021	Sept. 2020
<b>Weekly Earnings</b>	\$950.96	\$954.57	\$928.20
<b>Weekly Hours</b>	33.1	33.4	32.5
<b>Hourly Earnings</b>	\$28.73	\$28.58	\$28.56

# Delaware Labor Force Trends

Delaware's seasonally adjusted unemployment rate in September 2021 was 5.3%, down from 5.4% in August 2021. There were 26,100 unemployed Delawareans in September 2021 compared to 37,500 in September 2020. The US unemployment rate was 4.8% in September 2021, down from 5.2% in August 2021. In September 2020, the US unemployment rate was 7.8%, while Delaware's rate was 7.6%.

In September 2021, seasonally adjusted nonfarm employment was 449,300, down from 451,800 in August 2021. Since September 2020, Delaware's total nonfarm jobs have increased by a net gain of 7,600, a rise of 1.7%. Nationally, jobs during that period increased 4.0%.

## Delaware Nonfarm Employment

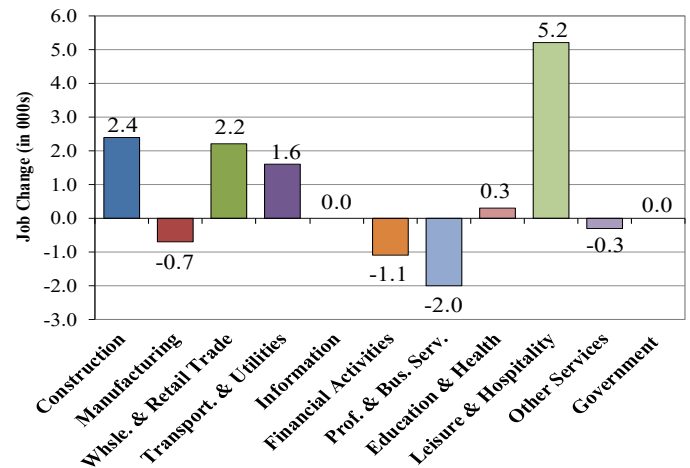
*Jobs at Delaware Locations*  
Seasonally Adjusted (in 000s)

INDUSTRY GROUP	Sept. 2021	Aug. 2021	Over the Month Change	Over the Year Change†
TOTAL NONAG. EMP.	449.3	451.8	-2.5	7.6
CONSTRUCTION	24.6	23.9	0.7	2.4
MANUFACTURING	24.4	24.5	-0.1	-0.7
Durable Goods	8.7	8.8	-0.1	-0.5
Nondurable Goods	15.7	15.7	0.0	-0.2
TRADE, TRANSP., & UTIL.	82.5	82.6	-0.1	3.8
Wholesale Trade	11.1	11.2	-0.1	0.2
Retail Trade	50.7	50.7	0.0	2.0
Transp. & Utilities	20.7	20.7	0.0	1.6
INFORMATION	3.6	3.8	-0.2	0.0
FINANCIAL ACTIVITIES	46.3	46.3	0.0	-1.1
PROF. & BUS. SERVICES	60.2	61.6	-1.4	-2.0
EDUCATION & HEALTH	78.0	78.0	0.0	0.3
LEISURE & HOSPITALITY	47.1	48.6	-1.5	5.2
OTHER SERVICES	16.3	16.5	-0.2	-0.3
GOVERNMENT	66.3	66.0	0.3	0.0
Federal Government	5.9	5.9	0.0	-0.8
State Government	31.4	31.9	-0.5	-1.0
Local Government	29.0	28.2	0.8	1.8

† Annual changes are not seasonally adjusted.  
Details may not add up due to rounding and seasonal adjustment.  
Source: US Department of Labor, Bureau of Labor Statistics.

## Delaware Over-the-Year Job Change

September 2020 — September 2021



## Consumer Price Index

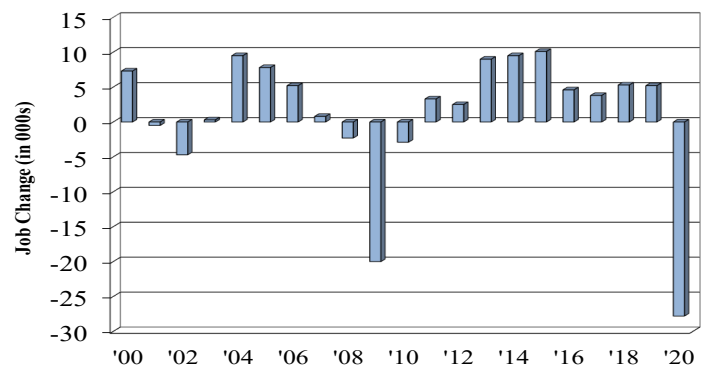
All Urban Consumers

	Percent Change to Sept. 2021 from:		
	Sept. 2020	July 2021	Aug. 2021
<b>US City Average</b>	5.4	0.5	0.3
<b>Phila.-Camden-Wilm.*</b>	NA	NA	NA

\* Data are published on a bi-monthly basis.

## Delaware Annual Net Job Change

Annual Average 2000—2020



Office of Occupational and Labor Market Information

For data questions, contact Tom Dougherty (302) 761-8062

<https://labor.delaware.gov/divisions/oolmi/>