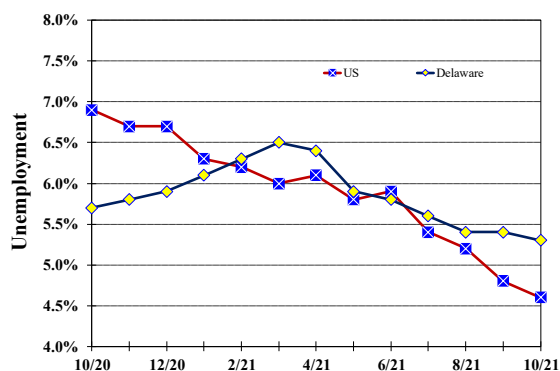


Unemployment Rate

Delaware and US
October 2020 - October 2021



Monthly Commentary

Delaware's seasonally adjusted unemployment rate of 5.3 percent in October 2021 is at the long-run average unemployment rate of 5.3 percent (as measured from January 2001 through October 2021). When there is full employment, Delaware's unemployment rate can drop below 4.0 percent. With 25,800 unemployed Delawareans, there are 3,600 more unemployed and 15,700 less jobs in October 2021 than there was prior to the pandemic in February 2020 when Delaware's unemployment rate was 4.5 percent.

Delaware Civilian Labor Force

Delaware Residents

	Oct. 2021	Sept. 2021	Oct. 2020
Civilian Labor Force	489,700	489,500	481,800
Employed	463,900	463,200	454,300
Unemployed	25,800	26,300	27,500
Unemployment Rate %	5.3	5.4	5.7
US Unemployment Rate %	4.6	4.8	6.9

Source: Delaware Dept. of Labor in cooperation with the US Dept. of Labor, Bureau of Labor Statistics.

Area Unemployment Rates (%)

	Oct. 2021	Sept. 2021	Oct. 2020
New Castle County	4.5	4.9	5.3
Wilmington	6.8	7.6	9.8
Newark	4.0	4.1	3.8
Kent County	5.2	5.7	5.6
Dover	7.1	7.7	8.3
Sussex County	4.1	4.4	4.3

Note: Area rates are not seasonally adjusted.

Source: Delaware Dept. of Labor in cooperation with the US Dept. of Labor, Bureau of Labor Statistics.

Hours & Earnings

All Employee (Total Private)

	Oct. 2021	Sept. 2021	Oct. 2020
Weekly Earnings	\$960.68	\$953.84	\$933.48
Weekly Hours	32.9	33.2	32.2
Hourly Earnings	\$29.20	\$28.73	\$28.99

Delaware Labor Force Trends

Delaware's seasonally adjusted unemployment rate in October 2021 was 5.3%, down from 5.4% in September 2021. There were 25,800 unemployed Delawareans in October 2021 compared to 27,500 in October 2020. The US unemployment rate was 4.6% in October 2021, down from 4.8% in September 2021. In October 2020, the US unemployment rate was 6.9%, while Delaware's rate was 5.7%.

In October 2021, seasonally adjusted nonfarm employment was 452,300, up from 449,900 in September 2021. Since October 2020, Delaware's total nonfarm jobs have increased by a net gain of 8,400, a rise of 1.9%. Nationally, jobs during that period increased 3.9%.

Delaware Nonfarm Employment

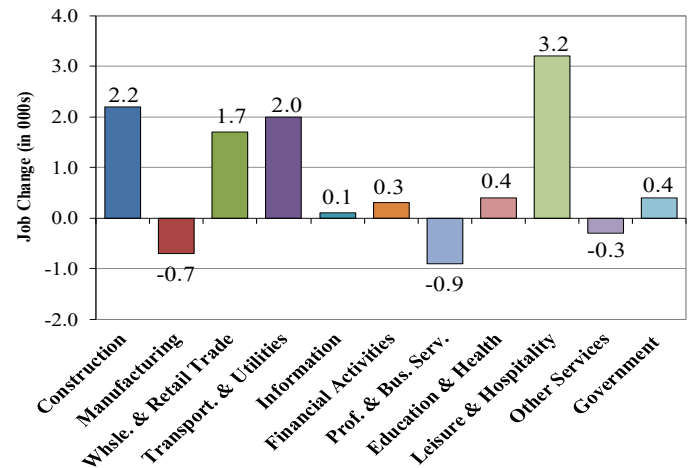
Jobs at Delaware Locations
Seasonally Adjusted (in 000s)

INDUSTRY GROUP	Oct. 2021	Sept. 2021	Over the Month Change	Over the Year Change†
TOTAL NONAG. EMP.	452.3	449.9	2.4	8.4
CONSTRUCTION	24.4	24.6	-0.2	2.2
MANUFACTURING	24.4	24.5	-0.1	-0.7
Durable Goods	8.7	8.7	0.0	-0.4
Nondurable Goods	15.7	15.8	-0.1	-0.3
TRADE, TRANSP., & UTIL.	84.6	83.1	1.5	3.7
Wholesale Trade	11.1	11.2	-0.1	0.0
Retail Trade	51.3	50.9	0.4	1.7
Transp. & Utilities	22.2	21.0	1.2	2.0
INFORMATION	3.7	3.7	0.0	0.1
FINANCIAL ACTIVITIES	47.1	46.4	0.7	0.3
PROF. & BUS. SERVICES	60.5	60.2	0.3	-0.9
EDUCATION & HEALTH	78.4	77.9	0.5	0.4
LEISURE & HOSPITALITY	47.1	47.2	-0.1	3.2
OTHER SERVICES	16.3	16.3	0.0	-0.3
GOVERNMENT	65.8	66.0	-0.2	0.4
Federal Government	5.9	5.9	0.0	-0.3
State Government	31.6	31.5	0.1	-0.4
Local Government	28.3	28.6	-0.3	1.1

† Annual changes are not seasonally adjusted.
Details may not add up due to rounding and seasonal adjustment.
Source: US Department of Labor, Bureau of Labor Statistics.

Delaware Over-the-Year Job Change

October 2020 — October 2021



Consumer Price Index

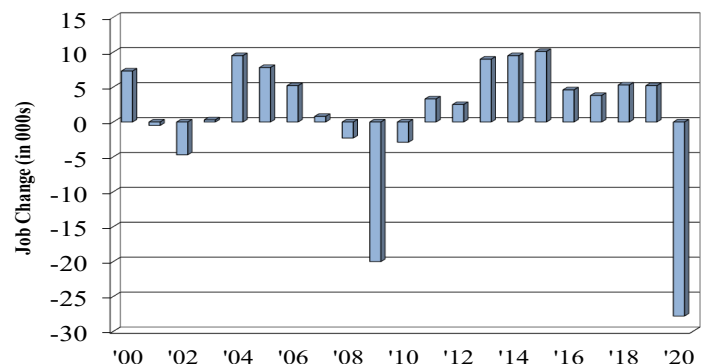
All Urban Consumers

	Percent Change to Oct. 2021 from:		
	Oct. 2020	Aug. 2021	Sept. 2021
US City Average	6.2	1.1	0.8
Phila.-Camden-Wilm.*	5.6	1.0	NA

* Data are published on a bi-monthly basis.

Delaware Annual Net Job Change

Annual Average 2000—2020



Office of Occupational and Labor Market Information

For data questions, contact Tom Dougherty (302) 761-8062

<https://labor.delaware.gov/divisions/oolmi/>