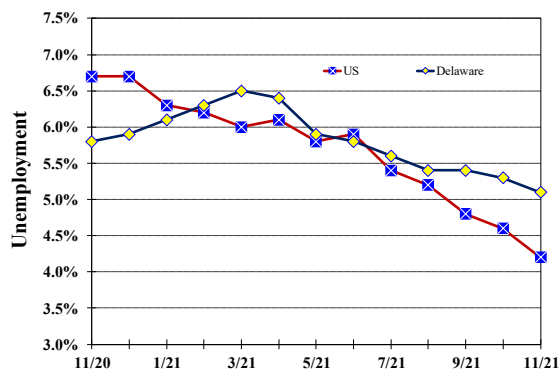


## Unemployment Rate

*Delaware and US*  
November 2020 - November 2021



## Delaware Civilian Labor Force

Delaware Residents

	Nov. 2021	Oct. 2021	Nov. 2020
Civilian Labor Force	490,300	489,700	481,900
Employed	465,100	463,900	454,000
Unemployed	25,200	25,800	27,900
Unemployment Rate %	5.1	5.3	5.8
US Unemployment Rate %	4.2	4.6	6.7

Source: Delaware Dept. of Labor in cooperation with the US Dept. of Labor, Bureau of Labor Statistics.

## Area Unemployment Rates (%)

	Nov. 2021	Oct. 2021	Nov. 2020
<b>New Castle County</b>	3.9	4.5	5.2
Wilmington	5.5	6.8	9.5
Newark	3.1	4.0	4.2
<b>Kent County</b>	4.5	5.2	5.6
Dover	5.8	7.2	8.2
<b>Sussex County</b>	3.8	4.1	4.5

Note: Area rates are not seasonally adjusted.

Source: Delaware Dept. of Labor in cooperation with the US Dept. of Labor, Bureau of Labor Statistics.

## Monthly Commentary

As recently as March, Delaware's unemployment rate was 6.5 percent, but with Delaware's seasonally adjusted unemployment rate declining to 5.1 percent in November, the unemployment rate continues its downward trend. During that time, the number of employed Delaware residents has increased by 7,400, and the number of unemployed has decreased by 6,500. While the unemployment rate has dropped 1.4 percentage points since March, a separate survey of Delaware business payroll data shows the number of jobs has increased by 8,500.

## Hours & Earnings

All Employee (Total Private)

	Nov. 2021	Oct. 2021	Nov. 2020
<b>Weekly Earnings</b>	\$945.36	\$967.23	\$949.28
<b>Weekly Hours</b>	32.7	33.0	32.7
<b>Hourly Earnings</b>	\$28.91	\$29.31	\$29.03

# Delaware Labor Force Trends

Delaware's seasonally adjusted unemployment rate in November 2021 was 5.1%, down from 5.3% in October 2021. There were 25,200 unemployed Delawareans in November 2021 compared to 27,900 in November 2020. The US unemployment rate was 4.2% in November 2021, down from 4.6% in October 2021. In November 2020, the US unemployment rate was 6.7%, while Delaware's rate was 5.8%.

In November 2021, seasonally adjusted nonfarm employment was 452,600, up from 451,500 in October 2021. Since November 2020, Delaware's total nonfarm jobs have increased by a net gain of 10,800, a rise of 2.4%. Nationally, jobs during that period increased 4.1%.

## Delaware Nonfarm Employment

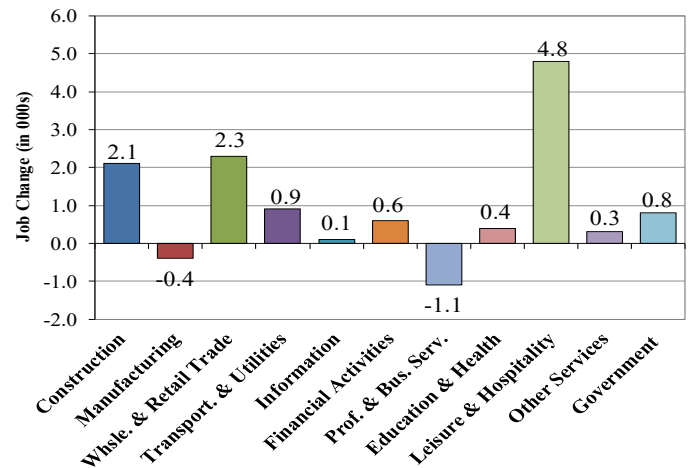
*Jobs at Delaware Locations*  
Seasonally Adjusted (in 000s)

INDUSTRY GROUP	Nov. 2021	Oct. 2021	Over the Month Change	Over the Year Change†
TOTAL NONAG. EMP.	452.6	451.5	1.1	10.8
CONSTRUCTION	24.6	24.4	0.2	2.1
MANUFACTURING	24.6	24.6	0.0	-0.4
Durable Goods	8.8	8.8	0.0	-0.2
Nondurable Goods	15.8	15.8	0.0	-0.2
TRADE, TRANSP., & UTIL.	83.6	84.1	-0.5	3.2
Wholesale Trade	11.0	11.0	0.0	-0.2
Retail Trade	51.3	51.2	0.1	2.5
Transp. & Utilities	21.3	21.9	-0.6	0.9
INFORMATION	3.7	3.7	0.0	0.1
FINANCIAL ACTIVITIES	47.3	47.1	0.2	0.6
PROF. & BUS. SERVICES	59.7	60.1	-0.4	-1.1
EDUCATION & HEALTH	78.3	78.4	-0.1	0.4
LEISURE & HOSPITALITY	48.6	47.1	1.5	4.8
OTHER SERVICES	16.5	16.3	0.2	0.3
GOVERNMENT	65.7	65.7	0.0	0.8
Federal Government	5.8	5.9	-0.1	0.0
State Government	31.3	31.3	0.0	-0.6
Local Government	28.6	28.5	0.1	1.4

† Annual changes are not seasonally adjusted.  
Details may not add up due to rounding and seasonal adjustment.  
Source: US Department of Labor, Bureau of Labor Statistics.

## Delaware Over-the-Year Job Change

November 2020 — November 2021



## Consumer Price Index

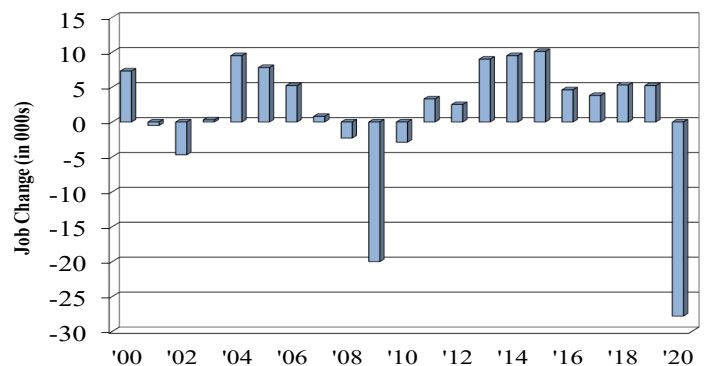
All Urban Consumers

	Percent Change to Nov. 2021 from:		
	Nov. 2020	Sept. 2021	Oct. 2021
<b>US City Average</b>	6.8	1.3	0.5
<b>Phila.-Camden-Wilm.*</b>	NA	NA	NA

\* Data are published on a bi-monthly basis.

## Delaware Annual Net Job Change

Annual Average 2000—2020



Office of Occupational and Labor Market Information

For data questions, contact Tom Dougherty (302) 761-8062

<https://labor.delaware.gov/divisions/oolmi/>