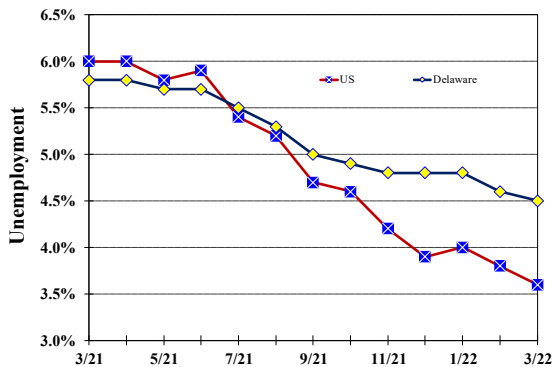


### Unemployment Rate

Delaware and US

March 2021 – March 2022



### Monthly Commentary

In March, the State's seasonally adjusted unemployment rate fell 0.1 percentage point from February to 4.5%, similar to the 0.2 percentage point decrease in the US unemployment rate. March job growth continued its upward trend, increasing by a net 9,100 or 2.1% over March 2021. The Leisure & Hospitality industry again led job growth, adding 3,400 jobs over the year prior. Wholesale & Retail Trade and Professional and Business Services also grew by 2,300 and 1,200 jobs, respectively, compared to March 2021. Education & Health Services jobs were down by 1,900 over-the-year.

### Delaware Civilian Labor Force

Delaware Residents

	Mar. 2022	Feb. 2022	Mar. 2021
Civilian Labor Force	498,600	498,200	495,500
Employed	476,000	475,200	467,000
Unemployed	22,600	23,000	28,500
Unemployment Rate %	4.5	4.6	5.8
US Unemployment Rate %	3.6	3.8	6.0

Source: Delaware Dept. of Labor in cooperation with the US Dept. of Labor, Bureau of Labor Statistics.

### Area Unemployment Rates (%)

	Mar. 2022	Feb. 2022	Mar. 2021
<b>New Castle County</b>	4.5	4.5	5.8
Wilmington	6.2	6.3	9.2
Newark	4.5	3.4	4.9
<b>Kent County</b>	5.3	5.2	6.6
Dover	6.8	6.6	9.1
<b>Sussex County</b>	4.7	4.7	5.7

Note: Area rates are not seasonally adjusted.

Source: Delaware Dept. of Labor in cooperation with the US Dept. of Labor, Bureau of Labor Statistics.

### Hours & Earnings

All Employee (Total Private)

	Mar. 2022	Feb. 2022	Mar. 2021
<b>Weekly Earnings</b>	\$966.60	\$962.94	\$946.99
<b>Weekly Hours</b>	32.9	33.0	32.7
<b>Hourly Earnings</b>	\$29.38	\$29.18	\$28.96

Source: Delaware Dept. of Labor in cooperation with the US Dept. of Labor, Bureau of Labor Statistics.

# Delaware Labor Force Trends

Delaware's seasonally adjusted unemployment rate in March 2022 was 4.5%, down from 4.6% in February 2022. There were 22,600 unemployed Delawareans in March 2022 compared to 28,500 in March 2021. The US unemployment rate was 3.6% in March 2022, down from 3.8% in February 2022. In March 2021, the US unemployment rate was 6.0%, while Delaware's rate was 5.8%.

In March 2022, seasonally adjusted nonfarm employment was 456,900, up from 455,500 in February 2022. Since March 2021, Delaware's total nonfarm jobs have increased by a net gain of 9,100, a rise of 2.1%. Nationally, jobs during that period increased 4.6%.

## Delaware Nonfarm Employment

Jobs at Delaware Locations  
Seasonally Adjusted (in 000s)

INDUSTRY GROUP	Mar. 2022	Feb. 2022	Over the Month Change	Over the Year Change†
TOTAL NONAG. EMP.	456.9	455.5	1.4	9.1
CONSTRUCTION	23.6	23.9	-0.3	0.0
MANUFACTURING	25.7	25.4	0.3	1.0
Durable Goods	9.5	9.4	0.1	0.7
Nondurable Goods	16.2	16.0	0.2	0.3
TRADE, TRANSP., & UTIL.	83.2	83.1	0.1	3.2
Wholesale Trade	11.5	11.4	0.1	0.5
Retail Trade	51.3	51.5	-0.2	1.8
Transp. & Utilities	20.4	20.2	0.2	0.9
INFORMATION	3.6	3.6	0.0	0.3
FINANCIAL ACTIVITIES	47.8	47.8	0.0	0.3
PROF. & BUS. SERVICES	63.7	63.5	0.2	1.2
EDUCATION & HEALTH	76.5	76.4	0.1	-1.9
LEISURE & HOSPITALITY	47.7	46.8	0.9	3.4
OTHER SERVICES	18.7	18.8	-0.1	0.5
GOVERNMENT	66.4	66.2	0.2	1.1
Federal Government	5.9	5.9	0.0	0.0
State Government	32.3	32.2	0.1	0.2
Local Government	28.2	28.1	0.1	0.9

† Annual changes are not seasonally adjusted.  
Details may not add up due to rounding and seasonal adjustment.  
Source: US Department of Labor, Bureau of Labor Statistics.

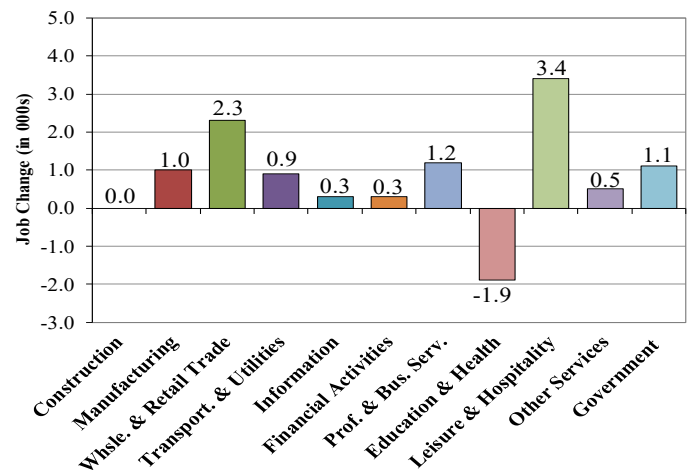
### Office of Occupational and Labor Market Information

For data questions, contact Tom Dougherty (302) 761-8062

<https://labor.delaware.gov/divisions/oolmi/>

## Delaware Over-the-Year Job Change

March 2021 – March 2022



## Consumer Price Index

All Urban Consumers

	Percent Change to Mar. 2022 from:		
	Mar. 2021	Jan. 2022	Feb. 2022
US City Average	8.5	2.3	1.3
Phila.-Camden-Wilm.*	NA	NA	NA

\* Data are published on a bi-monthly basis.

## Delaware Annual Net Job Change

Annual Average 2001–2021

