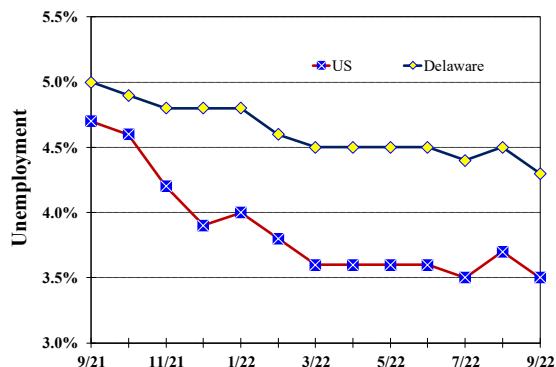


Unemployment Rate

Delaware and US

September 2021 – September 2022



Monthly Commentary

Delaware’s unemployment rate in September was 0.8 percentage points higher than the national rate. June 2021 was the last month that the state unemployment rate of 5.7 percent was lower than the national rate of 5.9 percent. One contributing factor to the state’s higher unemployment rate is slower growth in Delaware’s labor force, which continues to lag the US, having increased by 0.3 percent since June 2021 versus a national growth rate of 2.2 percent. Delaware employment has also trailed national employment growth since June 2021, increasing by 1.8 percent versus 4.8 percent.

Delaware Civilian Labor Force

Delaware Residents

	Sept. 2022	Aug. 2022	Sept. 2021
Civilian Labor Force	500,100	500,600	496,500
Employed	478,800	478,300	471,600
Unemployed	21,300	22,300	24,900
Unemployment Rate %	4.3	4.5	5.0
US Unemployment Rate %	3.5	3.7	4.7

Source: Delaware Dept. of Labor in cooperation with the US Dept. of Labor, Bureau of Labor Statistics.

Area Unemployment Rates (%)

	Sept. 2022	Aug. 2022	Sept. 2021
New Castle County	3.7	4.6	4.9
Wilmington	5.2	6.8	7.6
Newark	3.5	4.1	4.1
Kent County	4.4	5.7	5.5
Dover	6.1	7.3	7.6
Sussex County	3.5	3.9	4.3

Note: Area rates are not seasonally adjusted.

Source: Delaware Dept. of Labor in cooperation with the US Dept. of Labor, Bureau of Labor Statistics.

Hours & Earnings

All Employee (Total Private)

	Sept. 2022	Aug. 2022	Sept. 2021
Weekly Earnings	\$996.14	\$992.35	\$950.30
Weekly Hours	32.8	33.2	33.1
Hourly Earnings	\$30.37	\$29.89	\$28.71

Source: Delaware Dept. of Labor in cooperation with the US Dept. of Labor, Bureau of Labor Statistics.

Delaware Labor Force Trends

Delaware's seasonally adjusted unemployment rate in September 2022 was 4.3%, down from 4.5% in August 2022. There were 21,300 unemployed Delawareans in September 2022 compared to 24,900 in September 2021. The US unemployment rate was 3.5% in September 2022, down from 3.7% in August 2022. In September 2021, the US unemployment rate was 4.7%, while Delaware's rate was 5.0%.

In September 2022, seasonally adjusted nonfarm employment was 461,200, down from 464,100 in August 2022. Since September 2021, Delaware's total nonfarm jobs have increased by a net gain of 10,800, a rise of 2.4%. Nationally, jobs during that period increased 3.7%.

Delaware Nonfarm Employment

Jobs at Delaware Locations
Seasonally Adjusted (in 000s)

INDUSTRY GROUP	Sept. 2022	Aug. 2022	Over the Month Change	Over the Year Change†
TOTAL NONAG. EMP.	461.2	464.1	-2.9	10.8
CONSTRUCTION	23.5	23.4	0.1	0.8
MANUFACTURING	26.2	26.3	-0.1	1.2
Durable Goods	9.9	9.9	0.0	0.7
Nondurable Goods	16.3	16.4	-0.1	0.5
TRADE, TRANSP., & UTIL.	83.5	83.6	-0.1	2.2
Wholesale Trade	11.5	11.5	0.0	0.3
Retail Trade	51.1	51.1	0.0	1.2
Transp. & Utilities	20.9	21.0	-0.1	0.7
INFORMATION	3.6	3.6	0.0	-0.2
FINANCIAL ACTIVITIES	47.6	47.6	0.0	0.4
PROF. & BUS. SERVICES	64.1	64.8	-0.7	0.7
EDUCATION & HEALTH	77.7	77.1	0.6	1.3
LEISURE & HOSPITALITY	50.8	52.6	-1.8	4.6
OTHER SERVICES	18.9	18.6	0.3	0.4
GOVERNMENT	65.3	66.5	-1.2	-0.6
Federal Government	6.0	6.0	0.0	0.1
State Government	31.9	32.4	-0.5	-0.5
Local Government	27.4	28.1	-0.7	-0.2

† Annual changes are not seasonally adjusted.
Details may not add up due to rounding and seasonal adjustment.
Source: US Department of Labor, Bureau of Labor Statistics.

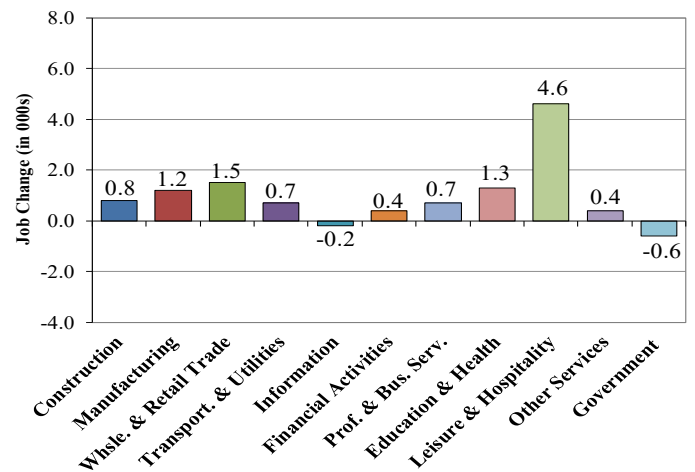
Office of Occupational and Labor Market Information

For data questions, contact Tom Dougherty (302) 761-8062

<https://labor.delaware.gov/divisions/oolmi/>

Delaware Over-the-Year Job Change

September 2021 – September 2022



Consumer Price Index

All Urban Consumers

	Percent Change to Sept. 2022 from:		
	Sept. 2021	July 2022	Aug. 2022
US City Average	8.2	0.2	0.2
Phila.-Camden-Wilm.*	NA	NA	NA

* Data are published on a bi-monthly basis.

Delaware Annual Net Job Change

Annual Average 2001–2021

