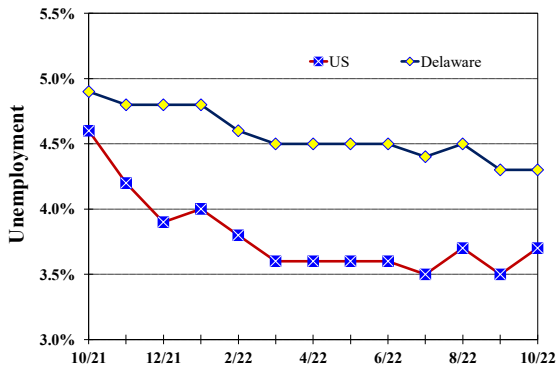


### Unemployment Rate

Delaware and US

October 2021 - October 2022



### Monthly Commentary

In October, the Consumer Price Index for the Philadelphia-Camden-Wilmington area rose 7.8 percent compared to the prior year, a percentage growth three times the growth in the State's average hourly wage of 2.6 percent. The Professional and Business Services sector saw the largest year-over-year average hourly wage increase, growing by 6.7 percent. The Trade, Transportation, and Utility industry had the second largest rise in its average hourly wage at 6.6 percent, while the Education and Health Services sector had the slowest growth at 0.3 percent compared to a year ago.

### Delaware Civilian Labor Force

Delaware Residents

	Oct. 2022	Sept. 2022	Oct. 2021
Civilian Labor Force	500,000	500,200	496,700
Employed	478,300	478,900	472,400
Unemployed	21,700	21,300	24,300
Unemployment Rate %	4.3	4.3	4.9
US Unemployment Rate %	3.7	3.5	4.6

Source: Delaware Dept. of Labor in cooperation with the US Dept. of Labor, Bureau of Labor Statistics.

### Area Unemployment Rates (%)

	Oct. 2022	Sept. 2022	Oct. 2021
<b>New Castle County</b>	4.0	3.7	4.6
Wilmington	5.5	5.2	7.0
Newark	4.2	3.5	4.1
<b>Kent County</b>	4.8	4.4	5.2
Dover	6.5	6.2	7.2
<b>Sussex County</b>	4.0	3.5	4.1

Note: Area rates are not seasonally adjusted.  
Source: Delaware Dept. of Labor in cooperation with the US Dept. of Labor, Bureau of Labor Statistics.

### Hours & Earnings

All Employee (Total Private)

	Oct. 2022	Sept. 2022	Oct. 2021
<b>Weekly Earnings</b>	\$1,006.01	\$993.51	\$966.24
<b>Weekly Hours</b>	33.5	32.8	33.0
<b>Hourly Earnings</b>	\$30.03	\$30.29	\$29.28

Source: Delaware Dept. of Labor in cooperation with the US Dept. of Labor, Bureau of Labor Statistics.

# Delaware Labor Force Trends

Delaware's seasonally adjusted unemployment rate in October 2022 was 4.3%, unchanged from September 2022. There were 21,700 unemployed Delawareans in October 2022 compared to 24,300 in October 2021. The US unemployment rate was 3.7% in October 2022, up from 3.5% in September 2022. In October 2021, the US unemployment rate was 4.6%, while Delaware's rate was 4.9%.

In October 2022, seasonally adjusted nonfarm employment was 463,600, up from 462,700 in September 2022. Since October 2021, Delaware's total nonfarm jobs have increased by a net gain of 11,600, a rise of 2.6%. Nationally, jobs during that period increased 3.4%.

## Delaware Nonfarm Employment

Jobs at Delaware Locations  
Seasonally Adjusted (in 000s)

INDUSTRY GROUP	Oct. 2022	Sept. 2022	Over the Month Change	Over the Year Change†
TOTAL NONAG. EMP.	463.6	462.7	0.9	11.6
CONSTRUCTION	23.8	23.5	0.3	0.7
MANUFACTURING	26.1	26.2	-0.1	1.2
Durable Goods	10.0	9.9	0.1	0.9
Nondurable Goods	16.1	16.3	-0.2	0.3
TRADE, TRANSP., & UTIL.	83.3	83.4	-0.1	1.4
Wholesale Trade	11.7	11.6	0.1	0.6
Retail Trade	51.0	51.0	0.0	0.6
Transp. & Utilities	20.6	20.8	-0.2	0.2
INFORMATION	3.6	3.6	0.0	-0.2
FINANCIAL ACTIVITIES	47.9	47.5	0.4	-0.2
PROF. & BUS. SERVICES	63.4	63.9	-0.5	-0.4
EDUCATION & HEALTH	78.1	77.8	0.3	1.7
LEISURE & HOSPITALITY	52.0	51.3	0.7	6.1
OTHER SERVICES	18.7	18.8	-0.1	0.3
GOVERNMENT	66.7	66.7	0.0	1.0
Federal Government	6.1	6.0	0.1	0.3
State Government	32.4	32.6	-0.2	0.2
Local Government	28.2	28.1	0.1	0.5

† Annual changes are not seasonally adjusted.  
Details may not add up due to rounding and seasonal adjustment.  
Source: US Department of Labor, Bureau of Labor Statistics.

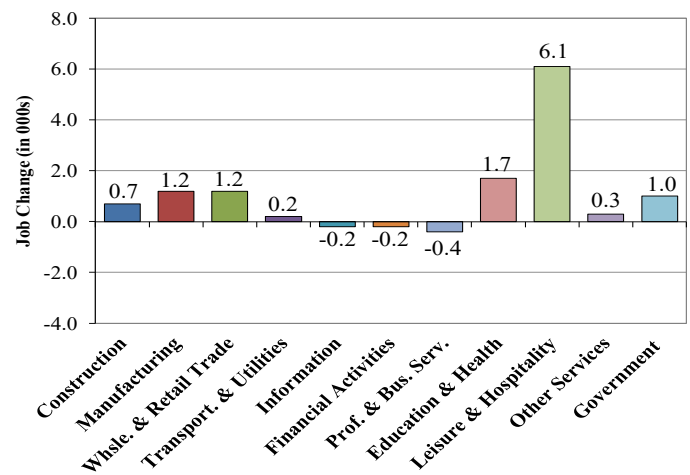
### Office of Occupational and Labor Market Information

For data questions, contact Tom Dougherty (302) 761-8062

<https://labor.delaware.gov/divisions/oolmi/>

## Delaware Over-the-Year Job Change

October 2021 – October 2022



## Consumer Price Index

All Urban Consumers

	Percent Change to Oct. 2022 from:		
	Oct. 2021	Aug. 2022	Sept. 2022
US City Average	7.7	0.6	0.4
Phila.-Camden-Wilm.*	7.8	0.6	NA

\* Data are published on a bi-monthly basis.

## Delaware Annual Net Job Change

Annual Average 2001–2021

