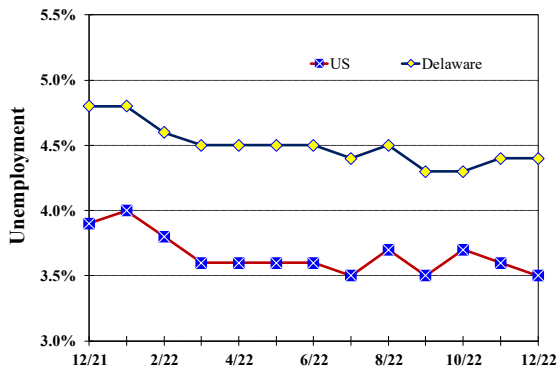


Unemployment Rate

Delaware and US

December 2021 - December 2022



Monthly Commentary

Delaware's Labor Force Participation rate fell to 60.2, a decrease of 1.0 percentage point from a year ago and the second-lowest rate on record with data going back to 1976. Average hourly earnings rose by \$0.50 or 1.7 percent over the year. Sectors with the greatest average hourly wage growth include Professional and Business Services, which increased by \$1.93 or 5.6 percent; Trade, Transportation, and Utilities at \$1.72 or 7.9 percent growth; and Construction, which grew by \$1.08 or 3.2 percent.

Delaware Civilian Labor Force

Delaware Residents

	Dec. 2022	Nov. 2022	Dec. 2021
Civilian Labor Force	497,300	498,700	497,000
Employed	475,600	477,000	473,100
Unemployed	21,700	21,700	23,900
Unemployment Rate %	4.4	4.4	4.8
US Unemployment Rate %	3.5	3.6	3.9

Source: Delaware Dept. of Labor in cooperation with the US Dept. of Labor, Bureau of Labor Statistics.

Area Unemployment Rates (%)

	Dec. 2022	Nov. 2022	Dec. 2021
New Castle County	3.8	3.9	4.0
Wilmington	5.0	5.2	5.5
Newark	3.4	4.0	3.2
Kent County	4.6	4.7	4.6
Dover	5.8	6.1	5.8
Sussex County	4.3	4.2	4.0

Note: Area rates are not seasonally adjusted.
Source: Delaware Dept. of Labor in cooperation with the US Dept. of Labor, Bureau of Labor Statistics.

Hours & Earnings

All Employee (Total Private)

	Dec. 2022	Nov. 2022	Dec. 2021
Weekly Earnings	\$974.16	\$978.78	\$966.37
Weekly Hours	33.0	32.9	33.3
Hourly Earnings	\$29.52	\$29.75	\$29.02

Source: Delaware Dept. of Labor in cooperation with the US Dept. of Labor, Bureau of Labor Statistics.

Delaware Labor Force Trends

Delaware's seasonally adjusted unemployment rate in December 2022 was 4.4%, unchanged from November 2022. There were 21,700 unemployed Delawareans in December 2022 compared to 23,900 in December 2021. The US unemployment rate was 3.5% in December 2022, down from 3.6% in November 2022. In December 2021, the US unemployment rate was 3.9%, while Delaware's rate was 4.8%.

In December 2022, seasonally adjusted nonfarm employment was 461,300, down from 463,000 in November 2022. Since December 2021, Delaware's total nonfarm jobs have increased by a net gain of 6,600, a rise of 1.4%. Nationally, jobs during that period increased 2.9%.

Delaware Nonfarm Employment

Jobs at Delaware Locations
Seasonally Adjusted (in 000s)

INDUSTRY GROUP	Dec. 2022	Nov. 2022	Over the Month Change	Over the Year Change†
TOTAL NONAG. EMP.	461.3	463.0	-1.7	6.6
CONSTRUCTION	24.0	23.9	0.1	0.5
MANUFACTURING	26.0	26.3	-0.3	0.6
Durable Goods	10.0	10.1	-0.1	0.5
Nondurable Goods	16.0	16.2	-0.2	0.1
TRADE, TRANSP., & UTIL.	83.8	83.7	0.1	1.5
Wholesale Trade	11.8	11.9	-0.1	0.5
Retail Trade	50.9	50.9	0.0	-0.1
Transp. & Utilities	21.1	20.9	0.2	1.1
INFORMATION	3.5	3.6	-0.1	-0.2
FINANCIAL ACTIVITIES	48.2	47.8	0.4	0.5
PROF. & BUS. SERVICES	62.1	63.5	-1.4	-1.4
EDUCATION & HEALTH	77.8	78.1	-0.3	1.5
LEISURE & HOSPITALITY	50.8	50.7	0.1	3.4
OTHER SERVICES	18.7	18.9	-0.2	0.0
GOVERNMENT	66.4	66.5	-0.1	0.2
Federal Government	6.1	6.0	0.1	0.3
State Government	32.4	32.5	-0.1	0.0
Local Government	27.9	28.0	-0.1	-0.1

† Annual changes are not seasonally adjusted.
Details may not add up due to rounding and seasonal adjustment.
Source: US Department of Labor, Bureau of Labor Statistics.

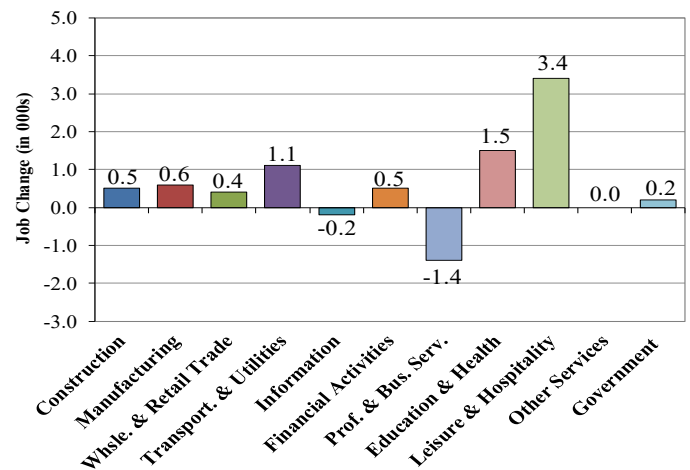
Office of Occupational and Labor Market Information

For data questions, contact Tom Dougherty (302) 761-8062

<https://labor.delaware.gov/divisions/oolmi/>

Delaware Over-the-Year Job Change

December 2021 – December 2022



Consumer Price Index

All Urban Consumers

	Percent Change to Dec. 2022 from:		
	Dec. 2021	Oct. 2022	Nov. 2022
US City Average	6.5	-0.4	-0.3
Phila.-Camden-Wilm.*	6.4	-0.4	NA

* Data are published on a bi-monthly basis.

Delaware Annual Net Job Change

Annual Average 2001–2021

