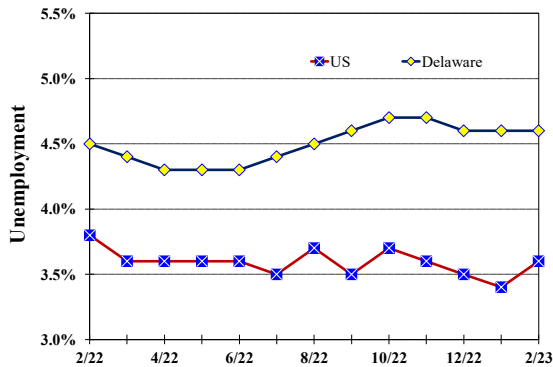


### Unemployment Rate

Delaware and US

February 2022 - February 2023



### Monthly Commentary

Year-over-year job growth in Delaware's non-farm industries was led by the *Trade, Transportation, and Utilities* industry, which grew by 3,000 workers over-the-year. Increases in the *Financial Activities Services* and *Leisure & Hospitality* industries also grew by 2,200 and 1,800 jobs since February 2022, respectively.

Delaware's labor force participation (LFP) rate declined to 59.7 in February, surpassing January's rate of 59.8 and becoming the second-lowest level on record dating back to 1976. February's LFP rate was 0.3 percent points higher than the lowest recorded rate of 59.4, set during the height of the pandemic in April 2020 and was 1.3 percentage points lower than February 2022's rate of 61.0.

### Delaware Civilian Labor Force

Delaware Residents

	Feb. 2023	Jan. 2023	Feb. 2022
Civilian Labor Force	495,900	496,000	497,500
Employed	473,300	473,100	475,200
Unemployed	22,600	22,900	22,300
Unemployment Rate %	4.6	4.6	4.5
US Unemployment Rate %	3.6	3.4	3.8

Source: Delaware Dept. of Labor in cooperation with the US Dept. of Labor, Bureau of Labor Statistics.

### Area Unemployment Rates (%)

	Feb. 2023	Jan. 2023	Feb. 2022
<b>New Castle County</b>	4.3	4.5	4.6
Wilmington	6.1	6.4	6.4
Newark	4.4	4.3	3.8
<b>Kent County</b>	5.1	5.2	5.3
Dover	6.0	6.3	6.7
<b>Sussex County</b>	4.9	5.0	5.1

Note: Area rates are not seasonally adjusted.  
Source: Delaware Dept. of Labor in cooperation with the US Dept. of Labor, Bureau of Labor Statistics.

### Hours & Earnings

All Employee (Total Private)

	Feb. 2023	Jan. 2023	Feb. 2022
<b>Weekly Earnings</b>	\$1,002.26	\$1,012.20	\$962.61
<b>Weekly Hours</b>	32.7	33.1	33.0
<b>Hourly Earnings</b>	\$30.65	\$30.58	\$29.17

Source: Delaware Dept. of Labor in cooperation with the US Dept. of Labor, Bureau of Labor Statistics.

**Office of Occupational and Labor Market Information**

For data questions, contact Tom Dougherty (302) 761-8062

# Delaware Labor Force Trends

Delaware's seasonally adjusted unemployment rate in February 2023 was 4.6%, unchanged from January 2023. There were 22,600 unemployed Delawareans in February 2023 compared to 22,300 in February 2022. The US unemployment rate was 3.6% in February 2023, up from 3.4% in January 2023. In February 2022, the US unemployment rate was 3.8%, while Delaware's rate was 4.5%.

In February 2023, seasonally adjusted nonfarm employment was 479,900, up from 478,900 in January 2023. Since February 2022, Delaware's total nonfarm jobs have increased by a net gain of 11,200, a rise of 2.4%. Nationally, jobs during that period increased 2.9%.

## Delaware Nonfarm Employment

Jobs at Delaware Locations  
Seasonally Adjusted (in 000s)

INDUSTRY GROUP	Feb. 2023	Jan. 2023	Over the Month Change	Over the Year Change†
TOTAL NONAG. EMP.	479.9	478.9	1.0	11.2
CONSTRUCTION	24.1	24.1	0.0	0.4
MANUFACTURING	27.0	26.7	0.3	1.0
Durable Goods	10.1	9.7	0.4	0.6
Nondurable Goods	16.9	17.0	-0.1	0.4
TRADE, TRANSP., & UTIL.	90.5	90.7	-0.2	3.0
Wholesale Trade	12.7	12.7	0.0	0.7
Retail Trade	49.5	49.8	-0.3	-0.7
Transp. & Utilities	28.3	28.2	0.1	3.0
INFORMATION	3.6	3.6	0.0	-0.1
FINANCIAL ACTIVITIES	49.9	50.0	-0.1	2.2
PROF. & BUS. SERVICES	67.0	66.8	0.2	1.3
PRIV. EDUCATION & HEALTH	79.4	79.3	0.1	0.2
LEISURE & HOSPITALITY	51.8	51.2	0.6	1.8
OTHER SERVICES	18.6	18.8	-0.2	-0.1
GOVERNMENT	68.0	67.7	0.3	1.5
Federal Government	6.2	6.0	0.2	0.3
State Government	31.9	31.9	0.0	-0.1
Local Government	29.9	29.8	0.1	1.3

† Annual changes are not seasonally adjusted.  
Details may not add up due to rounding and seasonal adjustment.  
Source: US Department of Labor, Bureau of Labor Statistics.

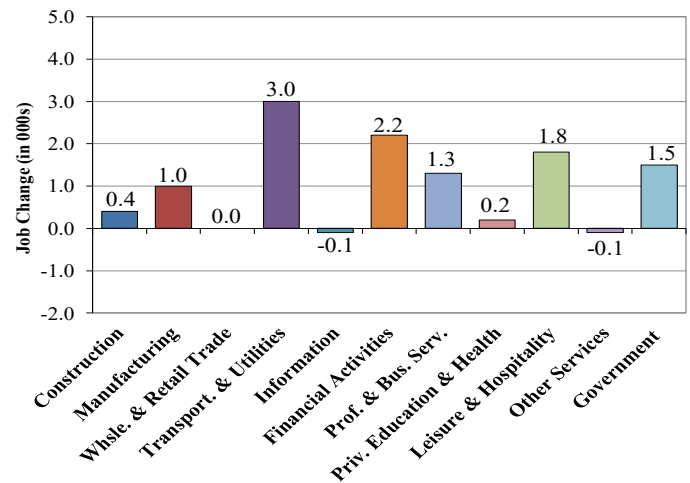
Office of Occupational and Labor Market Information

For data questions, contact Tom Dougherty (302) 761-8062

<https://labor.delaware.gov/divisions/oolmi/>

## Delaware Over-the-Year Job Change

February 2022 – February 2023



## Consumer Price Index

All Urban Consumers

	Percent Change to Feb. 2023 from:		
	Feb. 2022	Dec. 2022	Jan. 2023
US City Average	6.0	1.4	0.6
Phila.-Camden-Wilm.*	6.9	2.0	NA

\* Data are published on a bi-monthly basis.

## Delaware Annual Net Job Change

Annual Average 2002–2022

