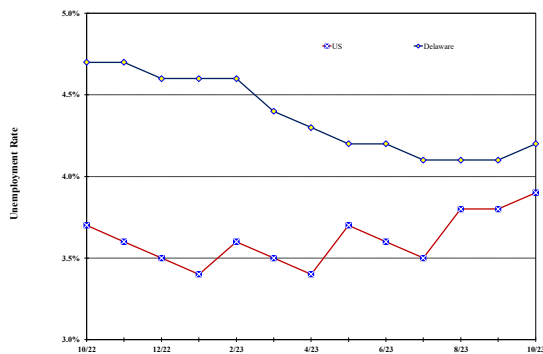


Unemployment Rate

Delaware and US

October 2022 - October 2023



Monthly Commentary

October's average private sector hourly wages were \$1.30 or 4.3 percent higher than a year ago, outpacing the growth rate of US city average consumer prices (CPI) by 1.1 percentage points, which rose by 3.2 percent over-the-year. The increase in average hourly wages was led by the *Manufacturing* super sector, whose average hourly wages grew by \$3.29 or 11.2 percent, over-the-year. The *Construction* industry was second in over-the-year average hourly wage increases, growing by \$2.82 or 8.3 percent. Offsetting these increases were the *Private Education and Health Services* and *Financial Activities* sectors, whose over-the-year average hourly wages declined by 1.8 and 0.2 percent, respectively.

Delaware Civilian Labor Force

Delaware Residents

	Oct. 2023	Sept. 2023	Oct. 2022
Civilian Labor Force	509,300	507,700	495,400
Employed	487,900	486,700	472,300
Unemployed	21,400	21,000	23,100
Unemployment Rate %	4.2	4.1	4.7
US Unemployment Rate %	3.9	3.8	3.7

Source: Delaware Dept. of Labor in cooperation with the US Dept. of Labor, Bureau of Labor Statistics.

Area Unemployment Rates (%)

	Oct. 2023	Sept. 2023	Oct. 2022
New Castle County	4.1	4.1	4.3
Wilmington	6.4	6.2	5.9
Newark	4.3	3.6	4.8
Kent County	4.7	4.5	5.3
Dover	6.1	5.8	6.9
Sussex County	4.0	3.8	4.5

Note: Area rates are not seasonally adjusted.
Source: Delaware Dept. of Labor in cooperation with the US Dept. of Labor, Bureau of Labor Statistics.

Hours & Earnings

All Employee (Total Private)

	Oct. 2023	Sept. 2023	Oct. 2022
Weekly Earnings	\$1,012.82	\$992.58	\$997.67
Weekly Hours	32.4	32.3	33.3
Hourly Earnings	\$31.26	\$30.73	\$29.96

Source: Delaware Dept. of Labor in cooperation with the US Dept. of Labor, Bureau of Labor Statistics.

Office of Occupational and Labor Market Information

For data questions, contact Tom Dougherty (302) 761-8062

Delaware Labor Force Trends

Delaware's seasonally adjusted unemployment rate in October 2023 was 4.2%, up from 4.1% in September 2023. There were 21,400 unemployed Delawareans in October 2023 compared to 23,100 in October 2022. The US unemployment rate was 3.9% in October 2023, up from 3.8% in September 2023. In October 2022, the US unemployment rate was 3.7%, while Delaware's rate was 4.7%.

In October 2023, seasonally adjusted nonfarm employment was 486,600, down from 487,600 in September 2023. Since October 2022, Delaware's total nonfarm jobs have increased by a net gain of 10,100, a rise of 2.1%. Nationally, jobs during that period increased by 1.9%.

Delaware Nonfarm Employment

Jobs at Delaware Locations
Seasonally Adjusted (in 000s)

INDUSTRY GROUP	Oct. 2023	Sept. 2023	Over the Month Change	Over the Year Change†
TOTAL NONAG. EMP.	486.6	487.6	-1.0	10.1
CONSTRUCTION	24.3	24.5	-0.2	0.4
MANUFACTURING	28.0	27.6	0.4	1.7
Durable Goods	10.1	9.9	0.2	0.6
Nondurable Goods	17.9	17.7	0.2	1.1
TRADE, TRANSP., & UTIL.	89.2	89.9	-0.7	-2.1
Wholesale Trade	12.1	12.1	0.0	-0.6
Retail Trade	50.2	50.4	-0.2	-0.3
Transp. & Utilities	26.9	27.4	-0.5	-1.2
INFORMATION	3.5	3.6	-0.1	-0.2
FINANCIAL ACTIVITIES	50.0	50.2	-0.2	0.3
PROF. & BUS. SERVICES	68.4	68.7	-0.3	2.2
PRIV. EDUCATION & HEALTH	81.6	81.2	0.4	2.6
LEISURE & HOSPITALITY	54.1	54.5	-0.4	3.9
OTHER SERVICES	17.6	17.9	-0.3	-1.5
GOVERNMENT	69.9	69.5	0.4	2.8
Federal Government	6.5	6.5	0.0	0.5
State Government	33.1	32.7	0.4	1.6
Local Government	30.3	30.3	0.0	0.7

† Annual changes are not seasonally adjusted.
Details may not add up due to rounding and seasonal adjustment.
Source: US Department of Labor, Bureau of Labor Statistics.

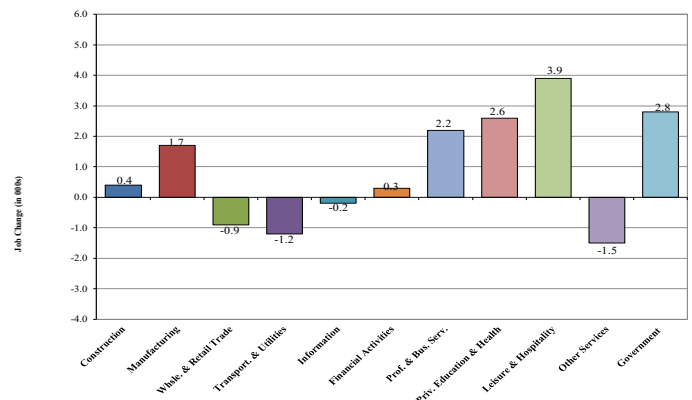
Office of Occupational and Labor Market Information

For data questions, contact Tom Dougherty (302) 761-8062

<https://labor.delaware.gov/divisions/oolmi/>

Delaware Over-the-Year Job Change

October 2022 – October 2023



Consumer Price Index

All Urban Consumers

	Percent Change to Oct. 2023 from:		
	Oct. 2022	Aug. 2023	Sept. 2023
US City Average	3.2	0.2	0.0
Phila.-Camden-Wilm.*	3.5	0.2	NA

* Data are published on a bi-monthly basis.

Delaware Annual Net Job Change

Annual Average 2002–2022

